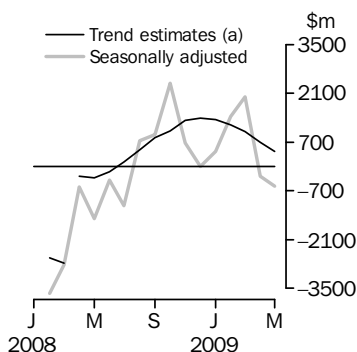


INTERNATIONAL TRADE IN GOODS AND SERVICES

AUSTRALIA

EMBARGO: 11.30AM (CANBERRA TIME) THURS 2 JUL 2009

Balance on Goods and Services



(a) A trend break of \$2,725m has been applied to April 2008.

KEY FIGURES

	March 2009	April 2009	May 2009	Apr 09 to May 09 %
	\$m	\$m	\$m	change
BALANCE ON GOODS AND SERVICES				
Trend estimates	998	699	448	-36
Seasonally adjusted	2 000	-282	-556	..
CREDITS (Exports of goods & services)				
Trend estimates	22 867	22 060	21 401	-3
Seasonally adjusted	24 068	21 504	20 392	-5
DEBITS (Imports of goods & services)				
Trend estimates	21 869	21 361	20 954	-2
Seasonally adjusted	22 068	21 786	20 948	-4

.. not applicable

KEY POINTS

BALANCE ON GOODS AND SERVICES

- The trend estimate of the *balance on goods and services* was a surplus of \$448m in May 2009, a decrease of \$251m (36%) on a revised surplus in April 2009.
- In seasonally adjusted terms, the *balance on goods and services* was a deficit of \$556m in May 2009, an increase of \$274m (97%) on a revised deficit in April 2009.

CREDITS (EXPORTS OF GOODS & SERVICES)

- Seasonally adjusted, *goods and services credits* fell \$1,112m (5%) to \$20,392m. *Non-rural goods* fell \$684m (5%), *other goods* fell \$368m (24%) and *rural goods* fell \$86m (3%). *Services credits* rose \$27m (1%).
- The fall in *non-rural goods* largely reflects the falls in the *coal, coke and briquettes* component, down \$540m (15%), the *other mineral fuels* component, down \$88m (7%) and the *metal ores and minerals* component, down \$78m (2%). The largest fall in *other goods* was in the *non-monetary gold* component, down \$351m (27%).

DEBITS (IMPORTS OF GOODS & SERVICES)

- Seasonally adjusted, *goods and services debits* fell \$838m (4%) to \$20,948m. *Capital goods* fell \$577m (14%), *intermediate and other merchandise goods* fell \$464m (7%) and *consumption goods* fell \$54m (1%). *Other goods* rose \$294m (35%). *Services debits* fell \$37m (1%).

INQUIRIES

For further information contact Selvi Sekhar on Canberra (02) 6252 5540 for goods, and Karen McGuigan on Canberra (02) 6252 5415 for services.

NOTES

FORTHCOMING ISSUES

ISSUE	RELEASE DATE
June 2009	5 August 2009
July 2009	3 September 2009
August 2009	6 October 2009
September 2009	5 November 2009
October 2009	9 December 2009
November 2009	7 January 2010



REVISIONS

Revisions have been made to incorporate the latest available data relating to merchandise trade and international trade in services. In original terms, these revisions have:

- turned around the surplus on goods and services for April 2009 by \$196m, resulting in a deficit of \$39m
- decreased the surplus on goods and services for the 10 months ended April 2009 by \$2,847m to \$6,260m.
- increased the deficit on goods and services for 2007-08 by \$2,055m with:
 - goods debits increasing by \$75m
 - service credits increasing by \$16m
 - services debits increasing by \$1,996m.

Both services credits and debits were revised back to July 2007 to incorporate the latest survey results, revised survey data for previous quarters and the latest administrative data. The largest revisions occur in transportation services credits and travel services debits.

IRON ORE AND COAL PRICES

See page 4 - *Commodity prices adjustment* for details of adjustments made to the value of iron ore exports for April and May 2009 in the Balance of Payment series.

INFORMATION UPDATE

See page 5 - *Classifications and standards update* for details of two information papers to be released in July 2009 and the release of updated information about industry and country classifications used in merchandise trade statistics.

Brian Pink
Australian Statistician

CONTENTS

page

Commodity prices adjustment	4
Classifications and standards update	5
Time series data	6

ANALYSIS

Analysis and comments	7
---------------------------------	---

TABLES

INTERNATIONAL TRADE IN GOODS AND SERVICES – BALANCE OF PAYMENTS BASIS

1 Goods and services, summary, seasonally adjusted and trend estimates	12
2 Goods and services, summary, original	13
3 Goods credits, original	14
4 Goods debits, original	15
5 Goods credits, seasonally adjusted	16
6 Goods debits, seasonally adjusted	17
7 Goods credits, trend estimates	18
8 Goods debits, trend estimates	19
9 Services, summary, original	20
10 Services, summary, seasonally adjusted and trend estimates	21
11 Services, original, quarterly	22

INTERNATIONAL MERCHANDISE TRADE – RECORDED TRADE BASIS

12 International merchandise exports, by commodity	23
13 International merchandise imports, by commodity	26
14 International merchandise trade, by country and country groups	29
15 International merchandise trade, by state	30

OTHER TABLES

16 Period average exchange rates per Australian dollar	31
---	----

OTHER INFORMATION

Explanatory Notes	32
Appendix – Related articles	37

COMMODITY PRICES ADJUSTMENT

PRICES ADJUSTMENT

Recorded trade exports data presented for recent months in tables 12-15 of this publication are based on information initially reported by exporters to the Australian Customs Service (ACS). At the time of initial reporting to ACS the final prices may not be known for some commodities. Therefore, the information recorded for recent months for commodities like iron ore and coal can include a variety of prices including previous or current contract prices and the prevailing spot prices. New contract prices that have been recently negotiated, or are still being negotiated, are not fully reflected in the data first reported to ACS. As with commodity price changes in previous years, it is expected that the decreased prices resulting from the negotiation of new contracts will be updated progressively in revised information reported to ACS and then reflected in recorded trade data.

IRON ORE

The balance of payments data in this publication for April and May 2009 include adjustments for the anticipated price decreases for iron ore exports from April 1. As progressive revisions to the recorded trade prices are reported to ACS and then provided to the ABS they will be incorporated into the balance of payment series and the adjustments reduced accordingly.

The balance of payment series has been reduced by a \$75m adjustment to both April and May 2009. In the unadjusted recorded trade series, the value of iron ore and concentrates decreased by 18% between March 2009 and May 2009 with prices down 29%. In the adjusted balance of payment series, the value of the comparable item decreased 20%, with prices down 31%.

COAL

On a recorded trade basis, the May 2009 prices for metallurgical coal fell 27% compared to April 2009 and 40% compared to March 2009. Similarly, May 2009 prices for non-metallurgical coal (bituminous coal) fell 9% compared to April 2009 and 25% when compared to March 2009. Because of these falls in price, and historical patterns showing that adjustments to coal prices occur progressively, no adjustments have been made to the balance of payments series. This will be reviewed as future data are observed.

CLASSIFICATIONS AND STANDARDS UPDATE

INFORMATION PAPERS TO BE RELEASED

The *Information Paper: Changes in International Trade in Goods Statistics - Countries and Ports* (cat. no. 5368.0.55.013) will be released on 9 July 2009. This paper outlines changes from the July 2009 reference month to country and port classifications used in the dissemination of Australian import and export statistics. The changed classifications will be reflected in import and export series from January 2009. These changes will impact on data released in the July 2009 issues of this publication, the publication *International Merchandise Imports, Australia* (cat. no. 5439.0) and related detailed trade data.

The *Information Paper: Revisions to international standards in quarterly Balance of Payments and International Investment Position statistics from September 2009* (cat. no. 5302.0.55.002) will be released on 22 July 2009. This paper describes the changes to the international standards and the impact on the presentation of statistics in the quarterly *Balance of Payments and International Investment Position, Australia* (cat. no. 5302.0). The paper further advises timing of the proposed changes and provides access to mock-ups of the proposed publication and the related spreadsheets. The mock-ups of the spreadsheets will be reissued in late October 2009 with new series identifiers.

An *Information paper: Revisions to international standards in monthly international trade in goods and services statistics from August 2009, 2009* (cat. no. 5368.0.55.012) advising the impact on this publication of the changes to international standards was released on 17 June 2009.

INDUSTRY STATISTICS

An update to the *Information paper: Changes to international trade in goods industry statistics, July 2009* (cat. no. 5368.0.55.011) is being released with this issue. The Customs Tariff to ANZSIC 2006 correspondence has been revised in Table 3 and Table 4 to include four new tariff items with operative dates of 1 July 2009.

COUNTRY STATISTICS

An update to the ABS publication *Australian Harmonized Exports Commodity Classification (AHECC)* (cat. no. 1233.0) is being released with this issue. The only change is an update to include the new United Nations country codes described in the first information paper mentioned above. The new codes are included in the Countries tab of Table 1: AHECC Summary of Classification, Codes and Abbreviations. There are no changes to export commodity codes in this update.

TIME SERIES DATA

TIME SERIES DATA

Data available free on the ABS web site include longer time series of tables in this publication and the additional spreadsheets and data cubes listed below.

- 31 Merchandise exports by Broad Economic Category (BEC)
- 32 Merchandise exports by industry of origin (ANZSIC)
- 33 Merchandise imports by Broad Economic Category (BEC)
- 34 Merchandise imports by Balance of Payments Broad Economic Category (BoPBEC)
- 35 Merchandise imports by industry of origin (ANZSIC)
- 36 Merchandise exports, state by country and country groups
- 37 Merchandise imports, state by country and country groups
- 91 Monthly seasonal adjustment factors and forward factors for 12 months.

TRADE IN SERVICES DATA CUBES

Trade in Services data are usually updated on an annual basis - with the March issue of this publication for calendar year (cat. no. 5368.0.55.004) and with the September issue for financial year (cat. no. 5368.0.55.003).

The following tables are included in both sets of data cubes:

- 1 International trade in services, credits, state by year
- 2 International trade in services, credits, year by state
- 3 International trade in services, debits, state by year
- 4 International trade in services, debits, year by state
- 5 International trade in services, credits, year by country and service
- 6 International trade in services, credits, service by year and by country
- 7 International trade in services, debits, year by country and service
- 8 International trade in services, debits, service by year and by country
- 9 International trade in services, credits and debits, year by detailed service
- 10 International trade in services, credits, year by country and travel service
- 11 International trade in services, debits, year by country and travel service

In addition, the following table is available on a calendar year basis and will be available on a financial year basis from the September 2009 issue.

- 12 International trade in services, credits, education related travel, by educational sector, by type of expenditure by year.

ANALYSIS AND COMMENTS

BALANCE ON GOODS AND SERVICES

The trend estimate of the balance on goods and services was a surplus of \$448m in May 2009, a decrease of \$251m (36%) on a revised surplus in April 2009.

In seasonally adjusted terms, the balance on goods and services was a deficit of \$556m in May 2009, an increase of \$274m (97%) on a revised deficit in April 2009.

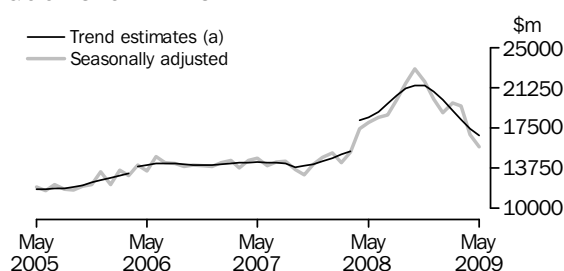
EXPORTS OF GOODS AND SERVICES

Between April 2009 and May 2009 the trend estimate of goods and services credits fell \$659m (3%) to \$21,401m.

In seasonally adjusted terms, goods and services credits fell \$1,112m (5%) to \$20,392m. Non-rural goods fell \$684m (5%), other goods fell \$368m (24%) and rural goods fell \$86m (3%). Services credits rose \$27m (1%).

Exports of goods

GOODS CREDITS



(a) Trend breaks of \$500m to April 2006 and \$2,725m to April 2008 have been applied.

RURAL GOODS

In trend terms, exports of rural goods fell \$21m (1%) to \$2,510m.

In seasonally adjusted terms, export of rural goods fell \$86m (3%) to \$2,375m.

The main components that contributed to the fall in the seasonally adjusted estimates were:

- other rural, down \$62m (6%)
- cereal grains and cereal preparations, down \$41m (7%).

Partly offsetting these decreases was the meat and meat preparations component, up \$24m (4%).

In original terms, exports of rural goods rose \$21m (1%) to \$2,506m.

NON-RURAL GOODS

In trend terms, exports of non-rural goods fell \$553m (4%) to \$12,573m.

In seasonally adjusted terms, exports of non-rural goods fell \$684m (5%) to \$12,177m.

The main components contributing to the fall in seasonally adjusted estimates were:

- coal, coke and briquettes, down \$540m (15%)
- other mineral fuels, down \$88m (7%)
- metal ores and minerals, down \$78m (2%).

ANALYSIS AND COMMENTS *continued*

Exports of goods *continued*

NON-RURAL GOODS *continued*

Partly offsetting these decreases was the other non-rural component, up \$114m (14%).

An adjustment has been made to the value of the metal ores and minerals component for both April and May 2009 for details see page 4 - *Commodity prices adjustment*.

In original terms, exports of non-rural goods fell \$92m (1%) to \$12,186m.

OTHER GOODS

In trend terms, exports of other goods fell \$112m (6%) to \$1,682m.

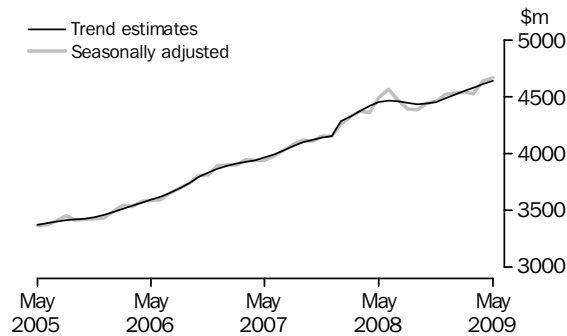
In seasonally adjusted terms, other goods fell \$368m (24%) to \$1,173m.

The main component contributing to the fall in seasonally adjusted estimates was non-monetary gold, down \$351m (27%).

In original terms, exports of other goods fell \$362m (24%) to \$1,171m.

Exports of services

SERVICES CREDITS



In trend terms, services credits rose \$26m (1%) to \$4,636m.

In seasonally adjusted terms, services credits rose \$27m (1%) to \$4,668m.

The main component contributing to the rise in the seasonally adjusted estimates was travel services, up \$31m (1%).

In seasonally adjusted terms, tourism related services credits rose \$24m (1%) to \$3,041m.

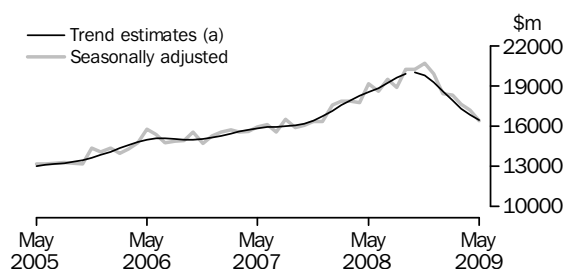
IMPORTS OF GOODS AND SERVICES

Between April 2009 and May 2009 the trend estimate of goods and services debits fell \$407m (2%) to \$20,954m.

In seasonally adjusted terms, goods and services debits fell \$838m (4%) to \$20,948m. Capital goods fell \$577m (14%), intermediate and other merchandise goods fell \$464m (7%), consumption goods fell \$54m (1%) and services debits fell \$37m (1%). Other goods rose \$294m (35%).

Imports of goods

GOODS DEBITS



(a) A trend break of \$167m has been applied to Capital goods, n.e.s. debits and related aggregates in October 2008.

CONSUMPTION GOODS

In trend terms, imports of consumption goods fell \$11m to \$4,952m.

In seasonally adjusted terms, imports of consumption goods fell \$54m (1%) to \$5,021m.

The main components contributing to the decrease in the seasonally adjusted estimates were:

- textiles, clothing and footwear, down \$54m (7%)
- non-industrial transport equipment, down \$20m (2%).

These decreases were partly offset by the household electrical items component, up \$29m (6%).

In original terms, imports of consumption goods fell \$184m (4%) to \$4,547m.

CAPITAL GOODS

In trend terms, imports of capital goods fell \$98m (3%) to \$3,769m.

In seasonally adjusted terms, imports of capital goods fell \$577m (14%) to \$3,615m.

The components contributing to the decrease in the seasonally adjusted estimates were:

- capital goods n.e.s., down \$302m (24%)
- machinery and industrial equipment, down \$221m (15%)
- ADP equipment, down \$61m (10%).

In original terms, imports of capital goods fell \$524m (13%) to \$3,482m.

INTERMEDIATE AND OTHER MERCHANDISE GOODS

In trend terms, imports of intermediate and other merchandise goods fell \$171m (3%) to \$6,614m.

In seasonally adjusted terms, imports of intermediate and other merchandise goods fell \$464m (7%) to \$6,626m.

The main components contributing to the decrease in the seasonally adjusted estimates were:

- other merchandise goods, down \$132m (60%)
- iron and steel, down \$80m (22%)
- other parts for capital goods, down \$58m (5%)
- parts for transport equipment, down \$55m (9%).

ANALYSIS AND COMMENTS *continued*

Imports of goods continued

INTERMEDIATE AND OTHER MERCHANDISE GOODS *continued*

In original terms, imports of intermediate and other merchandise goods fell \$703m (10%) to \$6,343m.

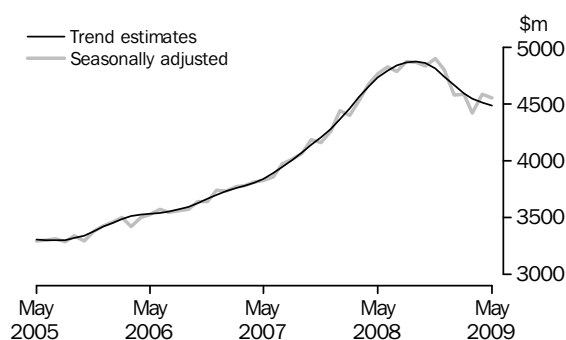
OTHER GOODS

In trend terms, imports of other goods fell \$107m (9%) to \$1,129m.

In both original terms and seasonally adjusted terms, other goods debits rose \$294m (35%) to \$1,136m. The main components contributing to this increase were goods for processing, up \$203m and non-monetary gold, up \$89m (14%).

Imports of services

SERVICES DEBITS



In trend terms, services debits fell \$21m to \$4,489m.

In seasonally adjusted terms, services debits fell \$37m (1%) to \$4,550m.

The component contributing to the fall in the seasonally adjusted estimates was transportation services, down \$53m (5%) while other services rose \$9m (1%) and travel services rose \$8m.

In seasonally adjusted terms, tourism related services debits fell \$8m to \$2,383m.

GOODS AND SERVICES(a), Summary: Seasonally Adjusted and Trend Estimates

Months	BALANCE	CREDITS					DEBITS					
	On goods and services	Total goods and services	Total goods	Rural goods(b)	Non-rural and other goods(b)	Total services	Total goods and services	Total goods	Con-sumption goods	Capital goods	Inter-mediate and other goods	Total services
	\$m	\$m	\$m	\$m	\$m	\$m	\$m	\$m	\$m	\$m	\$m	\$m
SEASONALLY ADJUSTED												
2008												
March	-2 813	19 594	15 220	2 206	13 014	4 374	-22 408	-17 882	-5 156	-4 180	-8 547	-4 525
April	-584	21 805	17 444	2 425	15 019	4 361	-22 389	-17 718	-4 925	-3 826	-8 966	-4 672
May	-1 490	22 449	17 956	2 441	15 515	4 493	-23 939	-19 172	-5 298	-3 944	-9 931	-4 767
June	-381	23 049	18 484	2 272	16 212	4 565	-23 430	-18 608	-5 173	-4 179	-9 256	-4 822
July	-1 115	23 184	18 715	2 219	16 496	4 469	-24 299	-19 512	-5 147	-4 035	-10 330	-4 787
August	732	24 462	20 071	2 311	17 760	4 390	-23 730	-18 861	-5 057	-4 253	-9 551	-4 869
September	922	26 027	21 644	2 242	19 402	4 384	-25 105	-20 241	-5 101	-4 433	-10 707	-4 864
October	2 393	27 465	23 028	2 572	20 457	4 437	-25 072	-20 238	-5 235	-4 438	-10 566	-4 834
November	681	26 241	21 785	2 493	19 292	4 456	-25 560	-20 660	-5 343	-4 400	-10 917	-4 899
December	13	24 726	20 208	2 515	17 693	4 518	-24 712	-19 912	-5 431	-5 225	-9 256	-4 801
2009												
January	440	23 416	18 883	2 466	16 417	4 533	-22 975	-18 395	-5 167	-4 410	-8 818	-4 581
February	1 426	24 338	19 796	2 554	17 242	4 542	-22 912	-18 325	-4 472	-4 755	-9 099	-4 587
March	2 000	24 068	19 539	2 789	16 750	4 529	-22 068	-17 653	-5 143	-4 236	-8 274	-4 416
April	-282	21 504	16 863	2 461	14 402	4 641	-21 786	-17 199	-5 075	-4 192	-7 932	-4 587
May	-556	20 392	15 724	2 375	13 350	4 668	-20 948	-16 398	-5 021	-3 615	-7 762	-4 550
TREND ESTIMATES												
2008												
March	-2 776	19 714	15 341	2 264	13 077	4 373	-22 490	-17 933	-5 121	-3 966	-8 845	-4 557
April(c)	-280	22 615	18 195	2 306	15 889	4 420	-22 895	-18 245	-5 117	-4 003	-9 125	-4 650
May	-312	22 941	18 487	2 317	16 170	4 454	-23 253	-18 523	-5 092	-4 037	-9 394	-4 730
June	-159	23 472	19 005	2 315	16 690	4 467	-23 631	-18 840	-5 067	-4 092	-9 680	-4 791
July	138	24 202	19 742	2 315	17 427	4 460	-24 064	-19 226	-5 069	-4 165	-9 993	-4 837
August	477	24 963	20 519	2 327	18 191	4 444	-24 486	-19 620	-5 118	-4 241	-10 261	-4 866
September	823	25 564	21 129	2 357	18 772	4 434	-24 741	-19 867	-5 182	-4 288	-10 396	-4 874
October(d)	1 032	25 907	21 471	2 410	19 061	4 437	-24 875	-20 019	-5 225	-4 432	-10 362	-4 856
November	1 317	25 880	21 425	2 476	18 949	4 454	-24 562	-19 752	-5 225	-4 381	-10 146	-4 810
December	1 386	25 396	20 910	2 529	18 381	4 486	-24 009	-19 270	-5 183	-4 333	-9 753	-4 740
2009												
January	1 343	24 590	20 070	2 556	17 514	4 520	-23 247	-18 585	-5 108	-4 215	-9 261	-4 662
February	1 207	23 706	19 155	2 561	16 593	4 551	-22 498	-17 904	-5 036	-4 092	-8 776	-4 594
March	998	22 867	18 286	2 553	15 733	4 581	-21 869	-17 325	-4 987	-3 976	-8 362	-4 544
April	699	22 060	17 450	2 531	14 919	4 610	-21 361	-16 851	-4 963	-3 867	-8 020	-4 510
May	448	21 401	16 765	2 510	14 255	4 636	-20 954	-16 465	-4 952	-3 769	-7 743	-4 489

(a) For sign conventions, see paragraph 11 of the Explanatory Notes.

(b) For all time periods, estimates for sugar, sugar preparations and honey are included in Non-rural and other goods.

(c) A trend break of \$2,725m has been applied to Non-rural and other goods credits and related aggregates in April 2008.

(d) A trend break of \$167m has been applied to Capital goods, n.e.s. debits and related aggregates in October 2008.

GOODS AND SERVICES(a), Summary: Original

	BALANCE	CREDITS					DEBITS					
	<i>On goods and services</i>	<i>Total goods and services</i>	<i>Total goods</i>	<i>Rural goods(b)</i>	<i>Non-rural and other goods(b)</i>	<i>Total services</i>	<i>Total goods and services</i>	<i>Total goods</i>	<i>Consumption goods</i>	<i>Capital goods</i>	<i>Intermediate and other goods</i>	<i>Total services</i>
	\$m	\$m	\$m	\$m	\$m	\$m	\$m	\$m	\$m	\$m	\$m	\$m
FINANCIAL YEAR												
2005-06	-14 520	196 274	154 425	25 266	129 159	41 849	-210 794	-169 716	-50 221	-40 077	-79 418	-41 078
2006-07	-12 757	215 695	169 514	25 075	144 439	46 181	-228 452	-184 024	-54 913	-41 765	-87 346	-44 428
2007-08	-23 563	233 851	182 816	25 480	157 336	51 035	-257 414	-205 164	-59 371	-45 351	-100 442	-52 250
MONTHS												
2008												
March	-1 215	20 060	15 537	2 370	13 167	4 523	-21 275	-17 036	-4 594	-4 120	-8 322	-4 239
April	-1 244	21 157	16 711	2 432	14 279	4 446	-22 401	-17 878	-4 958	-3 748	-9 172	-4 523
May	-681	22 475	18 104	2 626	15 478	4 371	-23 156	-18 608	-5 016	-3 821	-9 771	-4 548
June	-140	22 648	18 428	2 172	16 256	4 220	-22 788	-17 912	-4 769	-4 224	-8 919	-4 876
July	-1 319	23 405	18 858	2 149	16 709	4 547	-24 724	-19 764	-5 284	-4 048	-10 432	-4 960
August	1 574	25 163	20 662	2 288	18 374	4 501	-23 589	-18 752	-5 073	-4 208	-9 471	-4 837
September	-431	26 000	21 786	2 217	19 569	4 214	-26 431	-21 153	-5 578	-4 555	-11 020	-5 278
October	1 503	28 884	24 290	2 678	21 612	4 594	-27 381	-22 206	-6 135	-4 809	-11 262	-5 175
November	274	26 389	21 858	2 508	19 350	4 531	-26 115	-21 399	-5 793	-4 753	-10 853	-4 716
December	130	25 582	21 109	2 611	18 498	4 473	-25 452	-20 386	-5 529	-5 516	-9 341	-5 066
2009												
January	-529	21 890	17 435	2 195	15 240	4 455	-22 419	-17 595	-4 846	-4 046	-8 703	-4 824
February	2 338	23 164	18 571	2 523	16 048	4 593	-20 826	-16 851	-4 040	-4 153	-8 658	-3 975
March	2 759	24 634	19 970	2 970	17 000	4 664	-21 875	-17 688	-4 944	-4 345	-8 399	-4 187
April	-39	21 041	16 296	2 485	13 811	4 745	-21 080	-16 625	-4 731	-4 006	-7 888	-4 455
May	563	20 418	15 863	2 506	13 357	4 555	-19 855	-15 508	-4 547	-3 482	-7 479	-4 347
FINANCIAL YEAR TO DATE												
11 months ended May												
2008	-23 423	211 203	164 388	23 308	141 080	46 815	-234 626	-187 252	-54 602	-41 127	-91 523	-47 374
2009	6 823	266 570	216 698	27 130	189 568	49 872	-259 747	-207 927	-56 500	-47 921	-103 506	-51 820

(a) For sign conventions, see paragraph 11 of the Explanatory Notes.

(b) For all time periods, estimates for sugar, sugar preparations and honey are included in Non-rural and other goods.

							11 MONTHS ENDED MAY		Change
	2005-06	2006-07	2007-08	Mar 2009	Apr 2009	May 2009	2008	2009	
	\$m	\$m	\$m	\$m	\$m	\$m	\$m	\$m	
Total goods credits	154 425	169 514	182 816	19 970	16 296	15 863	164 388	216 698	31.8
<i>Rural goods</i>	25 266	25 075	25 480	2 970	2 485	2 506	23 308	27 130	16.4
Meat and meat preparations	6 709	7 078	6 540	681	559	632	5 988	6 918	15.5
Cereal grains and cereal preparations	4 852	4 171	4 976	922	687	607	4 475	6 286	40.5
Wool and sheepskins	2 544	3 065	2 796	227	187	189	2 617	2 174	-16.9
Other rural (a)	11 161	10 761	11 168	1 140	1 052	1 078	10 228	11 752	14.9
<i>Non-rural goods</i>	118 210	131 813	143 138	14 669	12 278	12 186	127 940	170 801	33.5
Metal ores and minerals	28 934	35 315	41 337	4 600	3 720	3 732	36 861	48 694	32.1
Coal, coke and briquettes	24 352	21 928	24 599	4 164	3 505	3 072	20 590	51 738	151.3
Other mineral fuels	13 218	15 642	18 889	1 359	1 168	1 126	16 967	19 362	14.1
Metals (excl. non-monetary gold)	11 271	14 820	14 038	834	828	884	12 740	11 453	-10.1
Machinery	8 066	8 422	8 792	785	660	680	8 107	8 273	2.0
Transport equipment	5 314	4 648	5 719	365	252	231	5 248	4 847	-7.6
Other manufactures	14 996	16 268	17 000	1 542	1 321	1 465	15 596	16 282	4.4
Other non-rural (incl. sugar and beverages)	12 059	14 770	12 764	1 020	824	996	11 831	10 152	-14.2
<i>Other goods</i>	10 949	12 626	14 198	2 331	1 533	1 171	13 140	18 767	42.8
Goods for processing	368	417	276	93	105	94	253	787	211.1
Repairs on goods	74	90	103	8	4	5	93	83	-10.8
Goods procured in ports by carriers	1 420	1 379	1 547	121	100	99	1 404	1 536	9.4
Non-monetary gold	9 087	10 740	12 272	2 109	1 324	973	11 390	16 361	43.6

(a) For all time periods, estimates for sugar, sugar preparations and honey are included in Other non-rural.

GOODS DEBITS(a): Original

	11 MONTHS ENDED MAY								
	2005-06	2006-07	2007-08	Mar	Apr	May	2008	2009	Change
	\$m	\$m	\$m	\$m	\$m	\$m	\$m	\$m	%
Total goods debits	-169 716	-184 024	-205 164	-17 688	-16 625	-15 508	-187 252	-207 927	11.0
<i>Consumption goods</i>	-50 221	-54 913	-59 371	-4 944	-4 731	-4 547	-54 602	-56 500	3.5
Food and beverages, mainly for consumption	-6 169	-7 182	-7 840	-755	-695	-639	-7 238	-8 182	13.0
Household electrical items	-4 191	-4 525	-5 051	-362	-458	-487	-4 571	-5 008	9.6
Non-industrial transport equipment	-13 596	-14 894	-16 872	-865	-871	-832	-15 477	-12 074	-22.0
Textiles, clothing and footwear	-6 364	-6 805	-7 051	-754	-667	-528	-6 550	-7 733	18.1
Toys, books and leisure goods	-4 057	-4 328	-4 561	-403	-384	-452	-4 190	-4 847	15.7
Consumption goods n.e.s.	-15 844	-17 179	-17 996	-1 805	-1 656	-1 609	-16 576	-18 656	12.5
<i>Capital goods</i>	-40 077	-41 765	-45 351	-4 345	-4 006	-3 482	-41 127	-47 921	16.5
Machinery and industrial equipment	-14 347	-15 330	-16 480	-1 806	-1 344	-1 144	-15 103	-17 174	13.7
ADP equipment	-6 158	-7 008	-7 074	-623	-613	-530	-6 464	-6 618	2.4
Telecommunications equipment	-5 320	-5 315	-5 790	-623	-521	-505	-5 307	-5 907	11.3
Civil aircraft(b)	-2 967	-1 667	-2 691	na	na	na	-2 191	na	na
Industrial transport equipment n.e.s.	-5 491	-6 454	-7 554	-409	-299	-316	-6 797	-6 192	-8.9
Capital goods n.e.s.(b)	-5 794	-5 991	-5 762	-884	-1 229	-987	-5 265	-10 506	99.5
<i>Intermediate and other merchandise goods</i>	-72 737	-79 923	-90 693	-7 065	-7 046	-6 343	-82 688	-89 702	8.5
Food and beverages, mainly for industry	-651	-819	-923	-93	-96	-88	-854	-1 107	29.6
Primary industrial supplies n.e.s.	-1 186	-1 552	-1 477	-142	-89	-78	-1 353	-1 782	31.7
Fuels and lubricants	-21 014	-21 470	-29 772	-1 704	-1 794	-1 777	-26 909	-26 205	-2.6
Parts for transport equipment	-7 315	-8 355	-8 833	-676	-637	-566	-8 100	-8 015	-1.0
Parts for ADP equipment	-1 857	-1 620	-1 115	-102	-82	-83	-1 020	-980	-3.9
Other parts for capital goods	-10 166	-11 780	-11 990	-1 249	-1 274	-1 145	-11 012	-13 136	19.3
Organic and inorganic chemicals	-4 133	-4 406	-4 673	-357	-406	-363	-4 255	-5 013	17.8
Paper and paperboard	-2 303	-2 368	-2 359	-192	-161	-149	-2 174	-2 254	3.7
Textile yarn and fabrics	-1 361	-1 366	-1 334	-114	-100	-93	-1 230	-1 251	1.7
Iron and steel	-3 240	-3 817	-3 721	-341	-340	-236	-3 350	-5 277	57.5
Plastics	-2 517	-2 957	-3 064	-243	-215	-192	-2 815	-2 830	0.5
Processed industrial supplies n.e.s.	-15 863	-17 794	-20 013	-1 781	-1 632	-1 485	-18 311	-20 407	11.4
Other merchandise goods(b)	-1 131	-1 619	-1 419	-71	-220	-88	-1 305	-1 445	10.7
<i>Other goods</i>	-6 681	-7 423	-9 749	-1 334	-842	-1 136	-8 835	-13 804	56.2
Goods for processing	-445	-507	-233	-195	-1	-204	-226	-869	. .
Repairs on goods	-115	-131	-117	-27	-15	-17	-108	-183	69.4
Goods procured in ports by carriers	-1 406	-1 468	-1 771	-150	-169	-169	-1 586	-1 859	17.2
Non-monetary gold	-4 715	-5 317	-7 628	-962	-657	-746	-6 915	-10 893	57.5

. . not applicable

na not available

(a) For sign conventions, see paragraph 11 of the Explanatory Notes.

(b) From December 2008, the Civil aircraft series and commodities subject to a 'no commodity details' or 'no value details' restriction are included in Capital goods n.e.s.. From September to November 2008 commodities with these restrictions are included in Civil aircraft and for earlier periods are included in Other merchandise goods.

GOODS CREDITS: Seasonally Adjusted

	Aug 2008	Sep 2008	Oct 2008	Nov 2008	Dec 2008	Jan 2009	Feb 2009	Mar 2009	Apr 2009	May 2009
	\$m	\$m	\$m	\$m	\$m	\$m	\$m	\$m	\$m	\$m
Total goods credits	20 071	21 644	23 028	21 785	20 208	18 883	19 796	19 539	16 863	15 724
<i>Rural goods</i>	2 311	2 242	2 572	2 493	2 515	2 466	2 554	2 789	2 461	2 375
Meat and meat preparations	591	627	724	654	630	606	654	632	579	603
Cereal grains and cereal preparations	521	380	505	477	618	562	592	837	612	571
Wool and sheepskins	213	216	241	202	186	182	196	184	177	169
Other rural(a)	987	1 019	1 101	1 160	1 081	1 116	1 111	1 137	1 093	1 031
<i>Non-rural goods</i>	16 273	17 883	18 652	17 677	16 140	14 765	14 780	14 422	12 861	12 177
Metal ores and minerals	4 739	5 451	5 000	4 325	3 984	4 231	4 401	4 411	3 950	3 872
Coal, coke and briquettes(b)	4 774	5 492	6 409	6 280	5 485	4 452	4 315	4 088	3 556	3 016
Other mineral fuels(c)	1 749	1 908	2 085	2 068	1 929	1 712	1 655	1 500	1 328	1 240
Metals (excl. non-monetary gold)(c)	1 294	1 304	1 252	1 190	1 018	887	891	797	854	815
Machinery	776	749	798	872	756	695	774	766	680	666
Transport equipment	521	529	622	466	483	425	362	364	267	212
Other manufactures	1 468	1 527	1 541	1 552	1 506	1 450	1 484	1 497	1 388	1 405
Other non-rural (incl. sugar and beverages)	953	924	946	924	979	912	898	1 000	837	951
<i>Other goods</i>	1 487	1 519	1 805	1 615	1 553	1 652	2 463	2 328	1 541	1 173
Goods for processing(d)	40	36	100	52	47	79	110	93	105	94
Repairs on goods(d)	10	8	5	8	12	7	7	8	4	5
Goods procured in ports by carriers(c)	158	162	172	158	136	133	134	118	108	101
Non-monetary gold(d)	1 279	1 313	1 528	1 397	1 358	1 433	2 212	2 109	1 324	973

(a) For all time periods, estimates for sugar, sugar preparations and honey are included in Other non-rural.

(b) Only a length-of-month effect has been applied to this component.

(c) In using these seasonally adjusted series, care should be exercised because of the difficulties associated with reliably estimating the seasonal pattern.

(d) This component is not seasonally adjusted.

GOODS DEBITS(a): Seasonally Adjusted

	Aug 2008	Sep 2008	Oct 2008	Nov 2008	Dec 2008	Jan 2009	Feb 2009	Mar 2009	Apr 2009	May 2009
	\$m	\$m	\$m	\$m	\$m	\$m	\$m	\$m	\$m	\$m
Total goods debits	-18 861	-20 241	-20 238	-20 660	-19 912	-18 395	-18 325	-17 653	-17 199	-16 398
<i>Consumption goods</i>	-5 057	-5 101	-5 235	-5 343	-5 431	-5 167	-4 472	-5 143	-5 075	-5 021
Food and beverages, mainly for consumption	-696	-734	-751	-750	-777	-759	-677	-790	-733	-736
Household electrical items	-373	-411	-445	-477	-436	-463	-390	-420	-491	-520
Non-industrial transport equipment	-1 413	-1 280	-1 202	-1 170	-1 231	-1 007	-790	-879	-868	-848
Textiles, clothing and footwear	-619	-646	-708	-736	-769	-749	-640	-779	-731	-677
Toys, books and leisure goods	-385	-429	-445	-448	-466	-449	-379	-468	-464	-469
Consumption goods n.e.s.	-1 571	-1 600	-1 685	-1 763	-1 752	-1 741	-1 595	-1 806	-1 788	-1 771
<i>Capital goods</i>	-4 253	-4 433	-4 438	-4 400	-5 225	-4 410	-4 755	-4 236	-4 192	-3 615
Machinery and industrial equipment	-1 530	-1 541	-1 602	-1 642	-1 658	-1 566	-1 517	-1 753	-1 464	-1 243
ADP equipment	-600	-595	-752	-681	-655	-593	-588	-581	-589	-528
Telecommunications equipment	-483	-553	-570	-547	-480	-556	-588	-595	-532	-534
Civil aircraft(b)(c)	-382	-512	-185	-265	na	na	na	na	na	na
Industrial transport equipment n.e.s.	-775	-745	-665	-606	-595	-494	-442	-410	-328	-333
Capital goods n.e.s.(b)	-484	-486	-664	-660	-1 837	-1 201	-1 620	-897	-1 279	-977
<i>Intermediate and other merchandise goods</i>	-8 500	-9 481	-9 550	-9 134	-8 273	-7 501	-7 154	-6 940	-7 090	-6 626
Food and beverages, mainly for industry	-91	-104	-107	-121	-107	-107	-97	-100	-98	-88
Primary industrial supplies n.e.s.(d)	-178	-153	-168	-254	-186	-189	-100	-135	-97	-104
Fuels and lubricants(c)	-2 672	-3 145	-3 295	-2 407	-2 055	-1 823	-1 870	-1 704	-1 794	-1 777
Parts for transport equipment	-808	-812	-814	-841	-720	-680	-624	-660	-647	-592
Parts for ADP equipment	-84	-87	-90	-119	-92	-91	-87	-90	-86	-76
Other parts for capital goods	-1 082	-1 152	-1 197	-1 302	-1 279	-1 265	-1 160	-1 234	-1 251	-1 193
Organic and inorganic chemicals	-473	-491	-511	-598	-515	-447	-417	-356	-402	-363
Paper and paperboard	-210	-223	-222	-224	-205	-206	-191	-190	-178	-169
Textile yarn and fabrics	-112	-117	-131	-124	-123	-114	-105	-112	-109	-97
Iron and steel	-492	-572	-617	-582	-653	-456	-446	-329	-358	-278
Plastics	-266	-279	-300	-284	-263	-233	-232	-247	-226	-200
Processed industrial supplies n.e.s.	-1 883	-1 980	-1 996	-2 211	-1 984	-1 806	-1 736	-1 712	-1 624	-1 602
Other merchandise goods(b)(c)	-149	-366	-101	-70	-90	-83	-90	-71	-220	-88
<i>Other goods</i>	-1 051	-1 226	-1 016	-1 783	-983	-1 317	-1 945	-1 334	-842	-1 136
Goods for processing(c)	-1	-1	-1	-139	-1	-170	-1	-195	-1	-204
Repairs on goods(c)	-11	-16	-11	-17	-22	-11	-25	-27	-15	-17
Goods procured in ports by carriers(c)	-199	-202	-156	-156	-157	-151	-151	-150	-169	-169
Non-monetary gold(e)	-840	-1 007	-848	-1 471	-803	-985	-1 768	-962	-657	-746

na not available

(a) For sign conventions, see paragraph 11 of the Explanatory Notes.

(b) From December 2008, the Civil aircraft series and commodities subject to a 'no commodity details' or 'no value details' restriction are included in Capital goods n.e.s.. From September to November 2008 commodities with these restrictions are included in Civil aircraft and for earlier periods are included in Other merchandise goods.

(c) These components are not seasonally adjusted.

(d) In using these seasonally adjusted series, care should be exercised because of the difficulties associated with reliably estimating the seasonal pattern.

(e) From October 1995, this component is not seasonally adjusted.

	Aug 2008	Sep 2008	Oct 2008	Nov 2008	Dec 2008	Jan 2009	Feb 2009	Mar 2009	Apr 2009	May 2009
	\$m	\$m	\$m	\$m	\$m	\$m	\$m	\$m	\$m	\$m
Total goods credits	20 519	21 129	21 471	21 425	20 910	20 070	19 155	18 286	17 450	16 765
<i>Rural goods</i>	2 327	2 357	2 410	2 476	2 529	2 556	2 561	2 553	2 531	2 510
Meat and meat preparations	623	636	649	655	651	639	625	615	605	601
Cereal grains and cereal preparations	495	475	478	510	559	604	637	655	660	659
Wool and sheepskins	215	216	214	208	200	192	186	181	177	175
Other rural(a)	995	1 031	1 070	1 103	1 119	1 121	1 113	1 102	1 089	1 075
<i>Non-rural goods</i>	16 714	17 230	17 446	17 232	16 562	15 614	14 667	13 846	13 126	12 573
Metal ores and minerals(b)	4 812	4 823	4 746	4 601	4 429	4 285	4 198	4 142	4 087	4 051
Coal, coke and briquettes(c)	4 978	5 451	5 752	5 772	5 478	4 969	4 421	3 938	3 521	3 198
Other mineral fuels	1 949	1 961	1 969	1 954	1 894	1 780	1 637	1 499	1 375	1 274
Metals (excl. non-monetary gold)	1 270	1 261	1 218	1 142	1 049	960	891	842	808	788
Machinery	759	775	787	791	782	764	743	723	703	684
Transport equipment	541	541	531	510	475	428	377	329	283	250
Other manufactures	1 491	1 504	1 517	1 524	1 514	1 494	1 471	1 449	1 430	1 412
Other non-rural (incl. sugar and beverages)	914	914	926	938	941	935	929	923	919	917
<i>Other goods</i>	1 477	1 542	1 615	1 717	1 819	1 900	1 926	1 887	1 794	1 682
Goods for processing	42	49	57	65	73	80	88	95	100	106
Repairs on goods	9	8	8	8	8	8	7	7	6	5
Goods procured in ports by carriers	158	160	159	154	146	136	127	118	110	105
Non-monetary gold	1 269	1 324	1 390	1 490	1 592	1 675	1 704	1 667	1 577	1 467

- (a) For all time periods, estimates for sugar, sugar preparations and honey are included in Other non-rural.
- (b) A trend break of \$725m has been applied to metal ores and minerals, and related aggregates in April 2008. This trend break will be reassessed with the annual seasonal reanalysis to be incorporated with results to be published in the August 2009 issue. Trend estimates from April 2008 should be used with caution.

- (c) A trend break of \$2,000m has been applied to coal, coke and briquettes, and related aggregates in April 2008. This trend break will be reassessed with the annual seasonal reanalysis to be incorporated with results to be published in the August 2009 issue. Trend estimates from April 2008 should be used with caution.

	Aug 2008	Sep 2008	Oct 2008	Nov 2008	Dec 2008	Jan 2009	Feb 2009	Mar 2009	Apr 2009	May 2009
	\$m	\$m	\$m	\$m	\$m	\$m	\$m	\$m	\$m	\$m
Total goods debits	-19 620	-19 867	-20 019	-19 752	-19 270	-18 585	-17 904	-17 325	-16 851	-16 465
<i>Consumption goods</i>	-5 118	-5 182	-5 225	-5 225	-5 183	-5 108	-5 036	-4 987	-4 963	-4 952
Food and beverages, mainly for consumption	-716	-729	-741	-750	-752	-750	-745	-742	-740	-738
Household electrical items	-407	-421	-433	-439	-441	-440	-442	-451	-463	-478
Non-industrial transport equipment	-1 347	-1 303	-1 248	-1 176	-1 094	-1 012	-941	-882	-837	-806
Textiles, clothing and footwear	-639	-667	-694	-719	-733	-735	-729	-722	-715	-707
Toys, books and leisure goods	-420	-430	-437	-441	-442	-442	-443	-446	-452	-458
Consumption goods n.e.s.	-1 590	-1 633	-1 671	-1 701	-1 721	-1 729	-1 735	-1 744	-1 756	-1 766
<i>Capital goods</i>	-4 241	-4 288	-4 432	-4 381	-4 333	-4 215	-4 092	-3 976	-3 867	-3 769
Machinery and industrial equipment	-1 541	-1 567	-1 592	-1 615	-1 626	-1 616	-1 584	-1 537	-1 481	-1 421
ADP equipment	-605	-636	-659	-665	-653	-628	-601	-579	-560	-549
Telecommunications equipment	-512	-525	-534	-543	-549	-553	-556	-558	-558	-557
Civil aircraft(b)	-339	-334	-313	-283	na	na	na	na	na	na
Industrial transport equipment n.e.s.	-752	-728	-686	-629	-566	-506	-452	-402	-359	-325
Capital goods n.e.s.(b)(c)	-493	-498	-649	-645	np	np	np	np	np	np
<i>Intermediate and other merchandise goods</i>	-9 141	-9 220	-9 110	-8 809	-8 357	-7 850	-7 396	-7 047	-6 785	-6 614
Food and beverages, mainly for industry	-94	-101	-106	-110	-110	-106	-102	-98	-95	-92
Primary industrial supplies n.e.s.	-173	-184	-192	-193	-185	-168	-147	-125	-108	-91
Fuels and lubricants	-3 164	-3 032	-2 810	-2 528	-2 244	-2 013	-1 849	-1 751	-1 695	-1 703
Parts for transport equipment	-809	-813	-802	-778	-742	-703	-668	-641	-619	-602
Parts for ADP equipment	-89	-92	-95	-97	-97	-95	-91	-87	-84	-80
Other parts for capital goods	-1 105	-1 154	-1 201	-1 238	-1 255	-1 250	-1 238	-1 226	-1 216	-1 205
Organic and inorganic chemicals	-484	-509	-523	-521	-501	-468	-431	-399	-374	-352
Paper and paperboard	-215	-218	-219	-217	-211	-204	-195	-187	-179	-173
Textile yarn and fabrics	-114	-119	-122	-122	-120	-117	-112	-108	-105	-102
Iron and steel	-512	-559	-589	-591	-560	-505	-442	-383	-332	-291
Plastics	-280	-282	-280	-274	-264	-252	-240	-229	-220	-213
Processed industrial supplies n.e.s.	-1 932	-1 984	-2 017	-2 014	-1 966	-1 881	-1 787	-1 704	-1 636	-1 577
Other merchandise goods(b)	-171	-174	-155	-127	-101	-90	-94	-107	-122	-132
<i>Other goods</i>	-1 120	-1 176	-1 252	-1 337	-1 397	-1 412	-1 380	-1 315	-1 236	-1 129
Goods for processing	-48	-41	-42	-52	-67	-82	-93	-104	-115	-123
Repairs on goods	-12	-13	-14	-16	-18	-19	-20	-20	-20	-19
Goods procured in ports by carriers	-192	-184	-173	-163	-155	-152	-154	-157	-161	-164
Non-monetary gold	-868	-938	-1 022	-1 106	-1 156	-1 158	-1 113	-1 035	-940	-823

na not available

np not available for publication but included in totals where applicable, unless otherwise indicated

(a) For sign conventions, see paragraph 11 of the Explanatory Notes.

(b) From December 2008, the Civil aircraft series and commodities subject to a 'no commodity details' or 'no value details' restriction are included in Capital goods n.e.s.. From September to November 2008 commodities with these restrictions are included in Civil aircraft and for earlier periods are included in Other merchandise goods. Trend estimates for the Capital goods n.e.s. series from December 2008 have been suppressed due to the change in the composition of the series.

(c) A trend break of \$167m has been applied to Capital goods, n.e.s. debits and related aggregates in October 2008.

SERVICES (a)(b), Summary—Original

	11 MONTHS ENDED MAY								
	2005-06	2006-07	2007-08	Mar	Apr	May	2008	2009	Change
	\$m	\$m	\$m	\$m	\$m	\$m	\$m	\$m	%
Services credits	41 849	46 181	51 035	4 664	4 745	4 555	46 815	49 872	6.5
Transportation services	8 208	8 617	9 247	670	642	604	8 513	7 728	-9.2
Passenger(c)	4 104	4 237	4 118	304	284	246	3 840	3 477	-9.5
Freight	608	609	637	50	50	50	584	617	5.7
Other	3 496	3 771	4 492	316	308	308	4 089	3 634	-11.1
Travel services	22 624	25 161	28 252	2 834	2 810	2 658	25 988	28 547	9.8
Other services	11 017	12 403	13 536	1 160	1 293	1 293	12 314	13 597	10.4
Services debits	-41 078	-44 428	-52 250	-4 187	-4 455	-4 347	-47 374	-51 820	9.4
Transportation services	-14 508	-15 360	-16 380	-1 182	-1 051	-1 035	-14 906	-14 768	-0.9
Passenger(c)	-6 284	-6 876	-7 278	-481	-442	-485	-6 532	-5 813	-11.0
Freight	-7 776	-8 036	-8 600	-652	-563	-504	-7 921	-8 412	6.2
Other	-448	-448	-502	-49	-46	-46	-453	-543	19.9
Travel services	-15 090	-15 934	-20 153	-1 519	-1 865	-1 774	-18 226	-20 287	11.3
Other services	-11 480	-13 134	-15 717	-1 486	-1 539	-1 538	-14 242	-16 765	17.7
Memorandum items:									
Tourism related service credits(d)	26 728	29 398	32 370	3 138	3 094	2 904	29 828	32 024	7.4
Tourism related service debits(d)	-21 374	-22 810	-27 431	-2 000	-2 307	-2 259	-24 758	-26 100	5.4

(a) For sign conventions, see paragraph 11 of the Explanatory Notes.

(b) For more detailed trade in services components, see table 11.

(c) Passenger services includes agency fees and commission receipts for air transport.

(d) For a more detailed explanation of tourism related services, see paragraphs 18 and 19 of the Explanatory Notes.

	Aug 2008	Sep 2008	Oct 2008	Nov 2008	Dec 2008	Jan 2009	Feb 2009	Mar 2009	Apr 2009	May 2009
	\$m	\$m	\$m	\$m	\$m	\$m	\$m	\$m	\$m	\$m
SEASONALLY ADJUSTED										
Services credits	4 390	4 384	4 437	4 456	4 518	4 533	4 542	4 529	4 641	4 668
Transportation services	752	746	676	691	697	703	678	657	662	654
Passenger(b)	323	318	302	315	326	324	301	286	301	293
Freight(c)	63	61	55	54	52	54	54	54	52	53
Other(c)	365	367	319	322	318	325	323	318	310	308
Travel services	2 410	2 403	2 526	2 524	2 571	2 616	2 636	2 646	2 716	2 747
Other services(c)	1 228	1 235	1 235	1 242	1 250	1 214	1 228	1 226	1 262	1 267
Services debits	-4 869	-4 864	-4 834	-4 899	-4 801	-4 581	-4 587	-4 416	-4 587	-4 550
Transportation services	-1 450	-1 469	-1 476	-1 503	-1 422	-1 286	-1 220	-1 194	-1 140	-1 087
Passenger(b)	-597	-585	-567	-547	-511	-504	-511	-490	-493	-477
Freight	-811	-842	-851	-898	-849	-733	-660	-655	-602	-564
Other(d)	-42	-42	-58	-58	-62	-49	-49	-49	-46	-46
Travel services	-1 905	-1 870	-1 843	-1 868	-1 843	-1 793	-1 847	-1 696	-1 899	-1 907
Other services(c)	-1 514	-1 525	-1 514	-1 528	-1 536	-1 501	-1 520	-1 526	-1 548	-1 557
Memorandum items:										
Tourism related service credits(e)	2 733	2 721	2 828	2 839	2 897	2 940	2 937	2 932	3 017	3 041
Tourism related service debits(e)	-2 502	-2 455	-2 410	-2 416	-2 354	-2 298	-2 358	-2 186	-2 391	-2 383

TREND ESTIMATES

Services credits	4 444	4 434	4 437	4 454	4 486	4 520	4 551	4 581	4 610	4 636
Transportation services	744	726	710	699	690	684	677	670	663	655
Passenger(b)	323	319	317	316	314	311	306	301	296	291
Freight	60	59	58	56	54	53	53	53	53	53
Other	362	348	336	327	322	320	318	316	314	311
Travel services	2 470	2 474	2 490	2 520	2 562	2 603	2 639	2 671	2 700	2 727
Other services	1 230	1 235	1 237	1 236	1 234	1 233	1 235	1 240	1 247	1 253
Services debits	-4 866	-4 874	-4 856	-4 810	-4 740	-4 662	-4 594	-4 544	-4 510	-4 489
Transportation services	-1 477	-1 479	-1 469	-1 440	-1 390	-1 324	-1 254	-1 191	-1 137	-1 093
Passenger(b)	-601	-581	-560	-541	-526	-513	-502	-493	-486	-482
Freight	-830	-850	-857	-844	-809	-758	-701	-649	-604	-566
Other	-46	-49	-52	-55	-55	-54	-51	-49	-47	-45
Travel services	-1 875	-1 873	-1 864	-1 847	-1 829	-1 816	-1 815	-1 822	-1 835	-1 851
Other services	-1 514	-1 522	-1 524	-1 523	-1 521	-1 521	-1 525	-1 531	-1 538	-1 545
Memorandum items:										
Tourism related service credits(e)	2 793	2 792	2 806	2 835	2 876	2 914	2 945	2 972	2 996	3 019
Tourism related service debits(e)	-2 475	-2 454	-2 424	-2 388	-2 355	-2 329	-2 317	-2 315	-2 322	-2 333

(a) For sign conventions, see paragraph 11 of the Explanatory Notes.

(b) Passenger services includes agency fees and commission receipts for air transport.

(c) In using these seasonally adjusted series, care should be exercised because of the difficulties associated with reliably estimating the seasonal pattern.

(d) This component is not seasonally adjusted.

(e) For a more detailed explanation of tourism related services, see paragraphs 18 and 19 of the Explanatory Notes.

	CREDITS				DEBITS			
	<i>Jun Qtr</i>	<i>Sep Qtr</i>	<i>Dec Qtr</i>	<i>Mar Qtr</i>	<i>Jun Qtr</i>	<i>Sep Qtr</i>	<i>Dec Qtr</i>	<i>Mar Qtr</i>
	2008	2008	2008	2009	2008	2008	2008	2009
	\$m	\$m	\$m	\$m	\$m	\$m	\$m	\$m
Services	13 037	13 262	13 598	13 712	-13 947	-15 075	-14 957	-12 986
Transportation services	2 270	2 261	2 106	2 115	-4 245	-4 480	-4 682	-3 520
Passenger(c)	896	949	987	1 011	-1 950	-1 887	-1 611	-1 388
Freight	155	201	166	150	-2 154	-2 467	-2 893	-1 985
Other	1 219	1 111	953	954	-141	-126	-178	-147
Travel services	7 097	7 352	7 610	8 117	-5 362	-6 044	-5 580	-5 024
Business	687	704	640	711	-811	-775	-753	-692
Personal	6 410	6 648	6 970	7 406	-4 551	-5 269	-4 827	-4 332
Education-related	3 775	4 181	3 729	4 196	-201	-309	-175	-177
Other	2 635	2 467	3 241	3 210	-4 350	-4 960	-4 652	-4 155
Communication services(d)	216	297	252	204	-229	-324	-375	-318
Construction services	8	42	27	21	—	—	—	—
Insurance services	181	186	186	186	-233	-243	-243	-243
Financial services	258	270	270	270	-155	-162	-162	-162
Computer and information services	425	453	462	426	-394	-399	-426	-399
Royalties and license fees	220	231	174	195	-888	-876	-870	-903
Other business services	1 959	1 761	2 103	1 761	-1 924	-1 842	-2 124	-1 863
Merchanting and other trade-related	307	219	243	276	-50	-63	-57	-45
Operational leasing	23	30	33	30	-221	-183	-216	-201
Miscellaneous business, professional and technical	1 629	1 512	1 827	1 455	-1 653	-1 596	-1 851	-1 617
Legal, accounting, management consulting and public relations	279	342	396	339	-152	-150	-204	-144
Advertising, market research and public opinion polling	64	90	111	93	-56	-27	-42	-51
Research and development	134	159	165	132	-41	-60	-87	-60
Architectural, engineering and other technical services	520	420	468	390	-496	-468	-564	-393
Agriculture, mining and on-site processing	99	84	72	66	-291	-246	-267	-180
Services between affiliated enterprises n.i.e.	335	237	396	231	-255	-267	-279	-228
Other	198	180	219	204	-362	-378	-408	-561
Personal, cultural, and recreational services	186	195	207	201	-277	-513	-282	-351
Audiovisual and related services	52	39	45	45	-248	-483	-237	-276
Personal, cultural and recreational services	134	156	162	156	-29	-30	-45	-75
Government services n.i.e.	217	214	201	216	-240	-192	-213	-203
Memorandum items:								
Tourism related services(e)	7 993	8 301	8 597	9 128	-7 312	-7 931	-7 191	-6 412

— nil or rounded to zero (including null cells)

(a) For sign conventions, see paragraph 11 of the Explanatory Notes.

(b) For more information see paragraphs 15 and 16 of the Explanatory Notes.

(c) Passenger services includes agency fees and commission receipts for air transport.

(d) Communications services includes other services n.i.e.

(e) For a more detailed explanation of tourism related services, see paragraphs 18 and 19 of the Explanatory Notes.

	Mar 2009	Apr 2009	May 2009	Per cent of total merchandise exports(b)	11 MONTHS ENDED MAY	
					2008	2009
					\$m	\$m
MAJOR COMMODITIES (c)						
011 Meat of bovine animals	456	366	416	2.6	4 012	4 692
041 Wheat and meslin	700	523	425	2.7	2 566	4 465
268 Wool and other animal hair	194	164	165	1.0	2 332	1 880
281 Iron ore and concentrates	3 225	2 516	2 640	16.7	18 122	32 466
283 Copper ores and concentrates	233	280	271	1.7	3 814	3 091
285 Aluminium ores and concentrates	427	395	391	2.5	5 400	5 770
321 Coal, not agglomerated	4 156	3 481	3 050	19.2	20 450	51 519
333 Crude petroleum oils	538	450	483	3.1	8 577	7 646
334 Refine petroleum oils	198	177	202	1.3	3 321	2 589
343 Natural gas	678	568	460	2.9	5 222	9 516
682 Copper	138	124	233	1.5	2 901	2 498
684 Aluminium	387	359	317	2.0	4 994	4 939
781 Motor vehicles for transport of people	156	94	50	0.3	3 075	2 581
971 Gold, non-monetary	2 028	1 260	941	5.9	11 176	15 772
SECTION AND DIVISION OF THE SITC						
0 Food and live animals						
00 Live animals other than fish, crustaceans, molluscs and aquatic invertebrates	103	86	101	0.6	872	1 079
01 Meat and meat preparations	682	560	632	4.0	5 990	6 920
02 Dairy products and birds' eggs	219	204	183	1.2	2 403	2 419
03 Fish (not marine mammals), crustaceans, molluscs and aquatic invertebrates, and preparations thereof	90	87	92	0.6	993	1 074
04 Cereals and cereal preparations	922	687	607	3.8	4 473	6 286
05 Vegetables and fruit	166	165	201	1.3	1 217	1 508
06 Sugars, sugar preparations and honey	25	13	27	0.2	210	242
07 Coffee, tea, cocoa, spices, and manufactures thereof	28	24	25	0.2	238	270
08 Feeding stuff for animals (excl. unmilled cereals)	125	120	107	0.7	756	1 235
09 Miscellaneous edible products and preparations	57	49	55	0.3	451	602
<i>Total Food and live animals</i>	<i>2 416</i>	<i>1 996</i>	<i>2 030</i>	<i>12.8</i>	<i>17 603</i>	<i>21 635</i>
1 Beverages and tobacco						
11 Beverages	226	190	228	1.4	2 634	2 425
12 Tobacco and tobacco manufactures	9	12	11	0.1	122	124
<i>Total Beverages and tobacco</i>	<i>234</i>	<i>201</i>	<i>240</i>	<i>1.5</i>	<i>2 757</i>	<i>2 548</i>
2 Crude materials, inedible, except fuels						
21 Hides, skins and furskins, raw	57	40	43	0.3	640	600
22 Oil-seeds and oleaginous fruits	128	98	51	0.3	343	637
23 Crude rubber (incl. synthetic and reclaimed)	1	1	1	—	7	11
24 Cork and wood	86	80	96	0.6	1 175	1 123
25 Pulp and waste paper	20	16	17	0.1	242	237
26 Textile fibres and their wastes (not manufactured into yarn or fabric)	222	207	231	1.5	2 787	2 371
27 Crude fertilizers (excl. those of Division 56) and crude minerals (excl. coal, petroleum and precious stones)	30	13	25	0.2	430	322
28 Metalliferous ores and metal scrap	4 570	3 782	3 782	23.9	36 137	48 530
29 Crude animal and vegetable materials, n.e.s.	20	18	18	0.1	187	219
<i>Total Crude materials, inedible, except fuels</i>	<i>5 134</i>	<i>4 254</i>	<i>4 264</i>	<i>26.9</i>	<i>41 947</i>	<i>54 050</i>
3 Mineral fuels, lubricants and related materials						
32 Coal, coke and briquettes	4 164	3 505	3 072	19.4	20 588	51 740
33 Petroleum, petroleum products and related materials	737	628	686	4.3	11 916	10 251
34 Gas, natural and manufactured	735	632	530	3.3	6 323	10 471
<i>Total Mineral fuels, lubricants and related materials</i>	<i>5 636</i>	<i>4 766</i>	<i>4 289</i>	<i>27.1</i>	<i>38 826</i>	<i>72 461</i>

— nil or rounded to zero (including null cells)

(a) Some SITC sections and divisions exclude commodities subject to a confidentiality restriction. These are included in Division 98. For more information see paragraph 17 of the Explanatory Notes.

(b) Per cent of total merchandise is calculated for the most recent month.

(c) The 'Major commodities' section lists commodities at the SITC Rev 4 3-digit level which are the most significant (by value) or are of particular interest. Abbreviated descriptors have been used. The list of 'Major commodities' is reviewed annually.

	Mar 2009	Apr 2009	May 2009	Per cent of total merchandise exports(b)	11 MONTHS ENDED MAY	
					2008	2009
					\$m	\$m
SECTION AND DIVISION OF THE SITC						
4	Animal and vegetable oils, fats and waxes					
41	28	23	24	0.1	348	293
42	12	11	16	0.1	102	165
43	Fats and oils (processed), waxes and inedible mixtures or preparations, of animal or vegetable origin, n.e.s.					
	1	3	1	—	13	13
	41	36	40	0.3	463	471
5	Chemicals and related products, nes					
51	17	11	15	0.1	160	156
52	73	38	43	0.3	789	518
53	56	58	71	0.4	563	551
54	355	303	363	2.3	3 614	3 661
55	Essential oils and resinoids and perfume materials; toilet, polishing and cleansing preparations					
	55	50	49	0.3	516	562
56	19	17	32	0.2	287	689
57	23	22	21	0.1	325	274
58	40	37	53	0.3	303	385
59	110	77	80	0.5	808	1 006
	749	612	726	4.6	7 364	7 801
6	Manufactured goods classified chiefly by material					
61	24	23	26	0.2	348	256
62	20	21	19	0.1	242	236
63	16	13	14	0.1	146	150
64	Paper, paperboard, and articles of paper pulp, of paper or of paperboard					
	60	56	62	0.4	644	627
65	30	28	27	0.2	367	331
66	53	64	58	0.4	713	806
67	70	85	61	0.4	1 293	1 287
68	764	743	823	5.2	11 445	10 166
69	86	95	98	0.6	1 001	1 015
	1 124	1 128	1 189	7.5	16 200	14 874
7	Machinery and transport equipment					
71	72	58	63	0.4	1 103	818
72	180	151	152	1.0	1 604	1 784
73	14	11	11	0.1	194	170
74	General industrial machinery and equipment, n.e.s. and machine parts, n.e.s.					
	160	158	155	1.0	1 569	1 741
75	106	77	84	0.5	1 037	1 109
76	Telecommunications and sound recording and reproducing apparatus and equipment					
	103	78	77	0.5	839	1 017
77	Electrical machinery, apparatus and appliances, parts (incl. non-electrical counterparts of electrical domestic equip)					
	145	123	134	0.8	1 715	1 590
78	227	160	140	0.9	4 204	3 510
79	138	92	91	0.6	1 021	1 338
	1 145	907	906	5.7	13 286	13 075

— nil or rounded to zero (including null cells)

(b) Per cent of total merchandise is calculated for the most recent month.

(a) Some SITC sections and divisions exclude commodities subject to a confidentiality restriction. These are included in Division 98. For more information see paragraph 17 of the Explanatory Notes.

	Mar 2009	Apr 2009	May 2009	Per cent of total merchandise exports(b)	11 MONTHS ENDED MAY	
					
					2008	2009
	\$m	\$m	\$m	%	\$m	\$m
SECTION AND DIVISION OF THE SITC						
8	Miscellaneous manufactured articles					
81	Prefabricated buildings and sanitary, plumbing, heating and lighting fixtures and fittings, n.e.s.					
	11	8	12	0.1	123	130
82	Furniture, parts thereof; bedding, mattresses, mattress supports, cushions and similar stuffed furnishings					
	11	7	8	0.1	97	115
83	Travel goods, handbags and similar containers					
	3	2	3	—	28	29
84	Articles of apparel and clothing accessories					
	23	18	18	0.1	238	223
85	Footwear					
	5	3	3	—	42	46
87	Professional, scientific and controlling instruments and apparatus, n.e.s.					
	209	180	195	1.2	1 726	2 062
88	Photographic apparatus, equipment and supplies and optical goods, n.e.s.; watches and clocks					
	37	28	30	0.2	300	343
89	Miscellaneous manufactured articles, n.e.s.					
	201	159	161	1.0	2 171	2 067
	<i>Total Miscellaneous manufactured articles</i>					
	500	406	430	2.7	4 727	5 015
9	Commodities and transactions not classified elsewhere in the SITC					
93	Special transactions and commodities not classified according to kind					
	166	171	165	1.0	1 108	1 603
95	Gold coin whether or not legal tender, and other coin being legal tender					
	81	64	32	0.2	216	590
96	Coin (excl. gold coin), not being legal tender					
	—	—	—	—	—	1
97	Gold, non-monetary (excl. gold ores and concentrates)					
	2 028	1 260	941	5.9	11 176	15 772
98	Combined confidential items excl. some of SITC 280 (exports only) and some of SITCs 510 and 520 (imports only)					
	576	527	597	3.8	7 083	5 568
	<i>Total Commodities and transactions not classified elsewhere in the SITC</i>					
	2 851	2 022	1 734	10.9	19 583	23 534
	Total merchandise exports					
	19 830	16 328	15 848	100.0	162 756	215 464
	Balance of Payments Adjustments					
	140	-32	15	. .	1 632	1 234
	Goods credits (exports) on a Balance of Payments Basis					
	19 970	16 296	15 863	. .	164 388	216 698

. . not applicable

— nil or rounded to zero (including null cells)

(a) Some SITC sections and divisions exclude commodities subject to a confidentiality restriction. These are included in Division 98. For more information see paragraph 17 of the Explanatory Notes.

(b) Per cent of total merchandise is calculated for the most recent month.

				Per cent	11 MONTHS	
	Mar	Apr	May	of total	ENDED MAY	
	2009	2009	2009	merchandise	2008	2009
	\$m	\$m	\$m	imports(b)	\$m	\$m
				%		
MAJOR COMMODITIES (c)						
333 Crude petroleum oils	749	869	965	6.6	15 186	13 365
334 Refined petroleum oils	817	711	724	4.9	10 792	11 361
542 Medicaments	751	649	685	4.7	5 958	6 723
641 Paper and paperboard	163	131	122	0.8	1 850	1 881
723 Civil engineering and contractors' plant and equipment	243	236	135	0.9	3 586	3 211
751 Office machines	177	144	142	1.0	1 720	1 798
752 Automatic data processing machines	508	511	430	2.9	5 030	5 343
761 Televisions	155	254	299	2.0	2 789	2 698
764 Telecommunications equipment	701	598	571	3.9	6 212	6 734
781 Motor vehicles for the transport of people	750	771	764	5.2	13 793	10 520
782 Motor vehicles for the transport of goods	330	232	192	1.3	5 496	4 715
784 Parts and accessories of motor vehicles	192	182	161	1.1	2 429	2 280
971 Gold, non-monetary	1 127	657	570	3.9	6 700	10 841

SECTION AND DIVISION OF THE SITC

0	Food and live animals					
00	Live animals other than fish, crustaceans, molluscs and aquatic invertebrates	11	10	8	0.1	114 100
01	Meat and meat preparations	66	46	44	0.3	380 520
02	Dairy products and birds' eggs	44	48	41	0.3	565 550
03	Fish (not marine mammals), crustaceans, molluscs and aquatic invertebrates, and preparations thereof	110	99	80	0.5	1 047 1 191
04	Cereals and cereal preparations	69	66	69	0.5	593 758
05	Vegetables and fruit	141	123	125	0.9	1 419 1 552
06	Sugars, sugar preparations and honey	21	20	24	0.2	211 243
07	Coffee, tea, cocoa, spices, and manufactures thereof	101	93	91	0.6	885 1 094
08	Feeding stuff for animals (excl. unmilled cereals)	54	27	50	0.3	470 558
09	Miscellaneous edible products and preparations	139	138	129	0.9	1 288 1 416
	<i>Total Food and live animals</i>	755	671	661	4.5	6 972 7 981
1	Beverages and tobacco					
11	Beverages	115	110	82	0.6	1 219 1 390
12	Tobacco and tobacco manufactures	30	32	27	0.2	174 219
	<i>Total Beverages and tobacco</i>	145	142	110	0.7	1 393 1 609
2	Crude materials, inedible, except fuels					
21	Hides, skins and furskins, raw	—	—	—	—	3 2
22	Oil seeds and oleaginous fruits	4	5	5	—	51 55
23	Crude rubber (incl. synthetic and reclaimed)	11	10	8	0.1	172 170
24	Cork and wood	48	41	38	0.3	613 550
25	Pulp and waste paper	20	9	11	0.1	276 254
26	Textile fibres and their wastes (not manufactured into yarn or fabric)	11	10	10	0.1	128 123
27	Crude fertilisers (excl. those of Division 56) and crude minerals (excl. coal, petroleum and precious stones)	16	13	10	0.1	249 443
28	Metalliferous ores and metal scrap	19	8	8	0.1	500 526
29	Crude animal and vegetable materials, n.e.s.	30	27	23	0.2	279 327
	<i>Total Crude materials, inedible, except fuels</i>	157	124	114	0.8	2 271 2 450
3	Mineral fuels, lubricants and related materials					
32	Coal, coke and briquettes	1	1	3	—	13 27
33	Petroleum, petroleum products and related materials	1 629	1 639	1 739	11.8	26 496 25 414
34	Gas, natural and manufactured	231	232	105	0.7	1 111 2 400
	<i>Total Mineral fuels, lubricants and related materials</i>	1 861	1 872	1 847	12.6	27 621 27 841

— nil or rounded to zero (including null cells)

(a) Some SITC sections and divisions exclude commodities subject to a confidentiality restriction. These are included in Division 98. For more information see paragraph 17 of the Explanatory Notes.

(b) Per cent of total merchandise is calculated for the most recent month.

(c) The 'Major commodities' section lists commodities at the SITC Rev 4 3-digit level which are the most significant (by value) or are of particular interest. Abbreviated descriptors have been used. The list of 'Major commodities' is reviewed annually.

	Mar	Apr	May	Per cent	11 MONTHS	
	2009	2009	2009	of total	ENDED MAY	
	\$m	\$m	\$m	merchandise	2008	2009
				imports(b)		
				%	\$m	\$m
SECTION AND DIVISION OF THE SITC						
4	Animal and vegetable oils, fats and waxes					
41	2	7	2	—	29	37
42	42	36	40	0.3	421	484
43	5	4	5	—	51	61
	49	46	47	0.3	501	582
5	Chemicals and related products, n.e.s.					
51	226	273	234	1.6	3 162	3 162
52	131	133	130	0.9	1 098	1 856
53	52	50	43	0.3	583	644
54	909	831	811	5.5	7 311	8 277
55	174	154	140	1.0	1 512	1 674
56	134	164	125	0.8	1 403	1 669
57	125	114	95	0.6	1 614	1 518
58	118	101	97	0.7	1 201	1 313
59	170	175	146	1.0	1 736	2 007
	2 040	1 996	1 821	12.4	19 621	22 120
6	Manufactured goods classified chiefly by material					
61	13	14	10	0.1	167	157
62	233	233	203	1.4	2 311	2 512
63	60	51	40	0.3	614	647
64	230	195	182	1.2	2 519	2 650
65	221	204	187	1.3	2 314	2 418
66	255	213	189	1.3	2 286	2 595
67	341	340	236	1.6	3 350	5 279
68	159	89	108	0.7	1 847	1 815
69	461	414	366	2.5	4 429	5 286
	1 972	1 754	1 519	10.3	19 835	23 359
7	Machinery and transport equipment					
71	497	458	341	2.3	4 073	5 018
72	588	590	487	3.3	7 227	7 435
73	82	56	44	0.3	712	702
74	1 230	958	885	6.0	8 977	11 073
75	795	745	664	4.5	7 872	8 241
76	953	934	960	6.5	10 161	10 630
77	903	806	773	5.3	8 274	9 367
78	1 407	1 312	1 224	8.3	23 799	19 539
79	159	126	162	1.1	4 477	3 297
	6 615	5 985	5 540	37.7	75 571	75 303

— nil or rounded to zero (including null cells)

(b) Per cent of total merchandise is calculated for the most recent month.

(a) Some SITC sections and divisions exclude commodities subject to a confidentiality restriction. These are included in Division 98. For more information see paragraph 17 of the Explanatory Notes.

				Per cent of total merchandise imports(b)	11 MONTHS ENDED MAY	
	Mar 2009	Apr 2009	May 2009		
	\$m	\$m	\$m		2008	2009
				\$m	\$m	
SECTION AND DIVISION OF THE SITC						
8	Miscellaneous manufactured articles					
81	Prefabricated buildings; sanitary, plumbing, heating and lighting fixtures and fittings, n.e.s.	63	70	65	0.4	645 773
82	Furniture, parts thereof; bedding, mattresses, mattress supports, cushions and similar stuffed furnishings	203	218	196	1.3	2 377 2 639
83	Travel goods, handbags and similar containers	59	64	51	0.3	625 772
84	Articles of apparel and clothing accessories	517	464	347	2.4	4 255 5 156
85	Footwear	124	91	80	0.5	1 106 1 312
87	Professional, scientific and controlling instruments and apparatus, n.e.s.	452	397	393	2.7	4 018 4 572
88	Photographic apparatus, equipment and supplies and optical goods, n.e.s.; watches and clocks	128	113	107	0.7	1 242 1 387
89	Miscellaneous manufactured articles, n.e.s.	883	961	887	6.0	8 893 10 517
	<i>Total Miscellaneous manufactured articles</i>	<i>2 429</i>	<i>2 378</i>	<i>2 125</i>	<i>14.4</i>	<i>23 161 27 127</i>
9	Commodities and transactions not classified elsewhere in the SITC					
93	Special transactions and commodities not classified according to kind	6	4	4	—	38 53
95	Gold coin whether or not legal tender, and other coin being legal tender	1	—	—	—	5 5
96	Coin (excl. gold coin), not being legal tender	—	—	—	—	— 1
97	Gold, non-monetary (excl. gold ores and concentrates)	1 127	657	570	3.9	6 700 10 841
98	Combined confidential items excl some of SITC 280 (exports only) and some of SITCs 510 and 520 (imports only)	166	578	354	2.4	483 4 509
	<i>Total Commodities and transactions not classified elsewhere in the SITC</i>	<i>1 299</i>	<i>1 239</i>	<i>928</i>	<i>6.3</i>	<i>7 227 15 409</i>
	Total merchandise imports	17 323	16 208	14 712	100.0	184 172 203 782
	Balance of Payments Adjustment	365	417	796	..	3 080 4 145
	Goods Debits (imports) on a Balance of Payments Basis	17 688	16 625	15 508	..	187 252 207 927

.. not applicable

— nil or rounded to zero (including null cells)

(a) Some SITC sections and divisions exclude commodities subject to a confidentiality restriction. These are included in Division 98. For more information see paragraph 17 of the Explanatory Notes.

(b) Per cent of total merchandise is calculated for the most recent month.

	EXPORTS				IMPORTS(b)				BALANCE OF MERCHANDISE TRADE	
	2007-08	May 2009	11	11	2007-08	May 2009	11	11	2007-08	May 2009
			Months Ended May 2008	Months Ended May 2009			Months Ended May 2008	Months Ended May 2009		
	\$m	\$m	\$m	\$m	\$m	\$m	\$m	\$m	\$m	
Belgium	1 327	47	1 172	1 262	1 727	103	1 591	1 611	-400	-349
Brazil	936	77	831	1 419	1 041	41	971	991	-105	427
Canada	1 620	150	1 511	1 408	2 187	127	1 993	2 297	-567	-889
China	27 034	4 012	24 201	36 159	30 994	2 579	28 520	34 444	-3 960	1 715
Denmark	177	17	162	165	895	73	820	987	-718	-822
Egypt(c)	310	34	294	401	17	2	17	30	292	370
Fiji	380	30	345	350	122	15	113	147	258	203
Finland	1 138	23	1 027	582	945	64	850	917	194	-335
France	1 500	86	1 320	1 606	4 989	264	4 481	4 335	-3 488	-2 729
Germany	1 450	146	1 298	2 055	10 576	767	9 674	10 303	-9 126	-8 249
Hong Kong (Sar of China)	2 838	246	2 567	2 970	1 380	90	1 276	1 313	1 458	1 657
India	9 328	1 370	8 462	14 160	1 606	133	1 454	1 980	7 722	12 179
Indonesia	3 957	331	3 632	3 882	4 585	398	4 221	4 636	-629	-754
Iran	164	28	148	626	54	3	38	93	110	534
Iraq	94	73	94	178	23	—	23	31	71	147
Ireland	241	8	230	122	2 006	208	1 812	2 164	-1 764	-2 042
Israel	254	26	206	247	685	39	635	670	-431	-423
Italy	1 456	82	1 409	1 521	4 895	377	4 526	4 912	-3 439	-3 391
Japan	34 967	2 546	30 772	49 647	19 679	1 105	17 985	16 351	15 288	33 297
Korea, Republic of	14 240	1 149	12 568	17 948	6 163	542	5 694	5 854	8 076	12 095
Kuwait	577	31	521	402	363	—	363	382	213	21
Malaysia	3 426	320	3 090	3 430	8 081	526	7 405	7 670	-4 656	-4 240
Mexico	551	78	515	807	1 238	100	1 120	1 233	-687	-426
Netherlands	2 864	126	2 483	3 043	1 555	117	1 418	1 651	1 309	1 391
New Zealand	9 529	657	8 659	7 939	7 044	499	6 412	6 522	2 485	1 417
Pakistan	491	43	473	447	154	15	143	170	336	277
Papua New Guinea	1 616	162	1 444	1 504	2 748	208	2 444	2 806	-1 132	-1 302
Philippines	1 280	85	1 211	1 352	763	64	702	562	517	790
Saudi Arabia	2 247	117	2 089	2 148	908	101	859	917	1 339	1 231
Singapore	5 226	555	4 891	5 167	13 685	697	11 817	12 668	-8 459	-7 501
South Africa	2 408	154	2 259	1 989	1 497	75	1 363	1 181	911	808
Spain	902	23	808	574	1 996	119	1 843	1 607	-1 094	-1 033
Sweden	445	20	383	548	2 461	165	2 261	2 263	-2 015	-1 714
Switzerland	944	47	928	574	2 129	215	1 917	2 279	-1 186	-1 705
Taiwan	6 479	629	5 806	7 720	4 127	255	3 815	3 859	2 352	3 861
Thailand	4 645	224	4 086	4 475	8 846	639	7 932	9 973	-4 201	-5 498
Turkey	655	9	580	778	404	33	374	479	251	299
United Arab Emirates	3 133	171	2 852	3 462	2 542	201	2 238	1 734	591	1 728
United Kingdom	8 309	390	7 655	10 933	8 498	502	7 920	8 552	-189	2 382
United States of America	10 602	744	9 736	10 944	24 325	1 917	22 117	23 723	-13 723	-12 779
Viet Nam	1 814	122	1 724	1 112	5 133	328	4 551	4 054	-3 319	-2 942
Other Countries(b)	9 305	659	8 313	9 407	9 241	1 005	8 464	15 430	64	-6 023
Total	180 857	15 848	162 756	215 464	202 307	14 712	184 172	203 782	-21 451	11 682
APEC	131 015	12 088	117 458	157 758	143 827	10 229	130 588	140 829	-12 812	16 929
ASEAN	20 471	1 650	18 749	19 550	42 219	2 715	37 751	40 599	-21 747	-21 049
Developing Countries	95 171	10 199	85 769	115 318	97 810	7 157	88 803	99 104	-2 638	16 214
Least Developed Countries	1 637	167	1 480	1 920	243	36	227	252	1 394	1 667
European Union(d)	20 462	998	18 510	22 854	43 226	2 966	39 652	42 217	-22 764	-19 363
OECD	93 496	6 376	83 734	112 813	107 367	7 580	98 177	102 001	-13 871	10 812

— nil or rounded to zero (including null cells)

(a) See Time series spreadsheets for details of all countries.

(b) From September 2008 imports data with confidentiality restrictions 'no commodity details' or 'no value details' are included in Other countries.

(c) Exports of Alumina to Egypt are excluded from country total and included in the 'Other Countries' category.

(d) The European Union includes 27 member countries.

			11 MONTHS ENDED MAY	
	2007-08	May 2009	2008	2009
	\$m	\$m	\$m	\$m
EXPORTS (a)				
New South Wales	30 091	2 744	27 172	36 075
Victoria	20 539	1 533	18 775	18 983
Queensland	35 318	3 471	30 869	52 703
South Australia	10 338	753	9 433	8 841
Western Australia	68 843	5 829	62 263	81 525
Tasmania	3 635	359	3 303	3 214
Northern Territory	4 544	459	4 035	5 888
Australian Capital Territory	4	—	4	10
State not available for publication(b)	895	31	783	752
Re-exports	6 650	669	6 119	7 472
Total	180 857	15 848	162 756	215 464
IMPORTS				
New South Wales	75 906	5 712	69 468	73 062
Victoria	56 058	3 770	51 085	52 618
Queensland	32 360	2 040	29 387	31 336
South Australia	7 342	454	6 755	6 409
Western Australia	27 355	2 173	24 444	30 990
Tasmania	691	56	618	908
Northern Territory	2 581	154	2 403	4 060
Australian Capital Territory	14	—	11	7
State not available for publication(c)	—	354	—	4 394
Total	202 307	14 712	184 172	203 782

— nil or rounded to zero (including null cells)

(a) State in which the final stage of production or manufacture occurs.

(b) Exports of Alumina to Bahrain, Egypt and Iceland are excluded from the state totals and included in 'State not available for publication'.

(c) From September 2008 imports data with confidentiality restrictions 'no commodity details' or 'no value details' are included in State not available for publication.

PERIOD AVERAGE EXCHANGE RATES (a): Per Australian dollar

<i>Period</i>	<i>United States dollar</i>	<i>UK pound sterling</i>	<i>Euro</i>	<i>Japanese yen</i>	<i>Trade-weighted index of value of the A\$(b)</i>
FINANCIAL YEAR					
2005-06	0.7474	0.4205	0.6143	85.90	63.3
2006-07	0.7863	0.4066	0.6018	93.21	64.8
2007-08	0.8968	0.4479	0.6099	98.63	69.7
MONTHS					
2008					
March	0.9260	0.4622	0.5964	93.36	69.8
April	0.9298	0.4695	0.5899	95.30	70.0
May	0.9491	0.4828	0.6098	98.90	72.2
June	0.9508	0.4840	0.6116	101.75	72.8
July	0.9625	0.4840	0.6102	102.71	73.3
August	0.8810	0.4668	0.5890	96.33	68.6
September	0.8205	0.4558	0.5700	87.49	64.9
October	0.6894	0.4070	0.5173	69.20	56.1
November	0.6557	0.4279	0.5155	63.55	54.4
December	0.6690	0.4480	0.4973	61.02	54.6
2009					
January	0.6784	0.4678	0.5095	61.37	55.4
February	0.6490	0.4503	0.5074	59.97	54.2
March	0.6646	0.4680	0.5093	64.92	56.0
April	0.7122	0.4846	0.5398	70.24	59.1
May	0.7626	0.4954	0.5596	73.72	61.7

- (a) These exchange rates and the trade-weighted index are derived using rates provided by the Reserve Bank of Australia in respect of each trading day.
- (b) May 1970 = 100. The Trade-weighted index is reweighted annually on 1 October and on special occasions as required.

EXPLANATORY NOTES

INTRODUCTION

1 This publication presents preliminary estimates of Australia's international trade in goods and services on a balance of payments basis and merchandise import and export statistics on a recorded trade basis.

2 Merchandise trade statistics on a recorded trade basis are compiled from information submitted by exporters and importers or their agents to the Australian Customs Service (ACS). Adjustments for coverage, timing and valuation are made to recorded trade data to convert them to a balance of payments basis. The main source for services data is the quarterly Survey of International Trade in Services.

3 More comprehensive quarterly estimates of Australia's trade in goods and services, together with comprehensive details of Australia's balance of payments are included in the quarterly publication, *Balance of Payments and International Investment Position, Australia* (cat. no. 5302.0). Detailed monthly statistics on merchandise trade are available on Time Series Spreadsheets or by subscription to tailored services.

CONCEPTS, SOURCES AND METHODS

4 The conceptual framework used in compiling Australia's merchandise trade statistics can be found in *International Merchandise Trade, Australia: Concepts, Sources and Methods, 2001* (cat. no. 5489.0).

5 The conceptual framework used in compiling Australia's balance of payments statistics is based on the Fifth Edition of the International Monetary Fund's *Balance of Payments Manual* (BPM5,1993). Descriptions of the underlying concepts and structure of the balance of payments and the sources, methods and terms used in compiling the estimates are presented in *Balance of Payments and International Investment Position, Australia: Concepts, Sources and Methods, 1998* (cat. no. 5331.0). To bring merchandise trade statistics on a recorded trade basis to a balance of payments basis, timing adjustments are made to ensure that the transaction is recorded in the period in which ownership changed, rather than in the period in which the transaction was recorded by ACS. Adjustments are also made to account for the change of ownership of goods not included in merchandise trade statistics. Chapter 6 of cat. no. 5331.0 provides more detail on the relationship between statistics on international merchandise trade on a recorded trade basis and on a balance of payments basis.

6 Both of the Concepts, Sources and Methods publications are available to download for free from the ABS website. Select *Methods, Classifications, Concepts & Standards*, then choose *ABS concepts, classifications and statistical standards* and then the catalogue numbers as above.

SEASONAL ADJUSTMENT

7 The estimates of international trade in goods and services on a balance of payments basis are seasonally adjusted, however the merchandise exports and imports statistics on a recorded trade basis are not. Monthly original estimates are volatile, being subject to calendar-related and large irregular influences. Seasonally adjusted estimates are derived by estimating and removing from the original series systematic calendar related effects, such as seasonal, trading day, length of month and moving holiday influences. Seasonal adjustment does not aim to remove the irregular or non-seasonal influences which may be present in any particular month. These irregular influences may reflect both random economic events and difficulties of statistical recording.

8 The seasonally adjusted statistics in this publication use the concurrent seasonal adjustment technique and Autoregressive Integrated Moving Average (ARIMA) Modelling to estimate factors for the current and previous months. Under concurrent seasonal adjustment, the estimates of seasonal factors are fine tuned as new original estimates become available each period. The seasonally adjusted estimates are subject to revisions at each reference month as the estimates of seasonal factors are improved. For more information on seasonal adjustment methods, see *Information Paper: An Introductory Course on Time Series Analysis, Jan 2005* (cat. no. 1346.0.55.001), *Time Series Analysis*

EXPLANATORY NOTES *continued*

SEASONAL ADJUSTMENT

continued

Frequently Asked Questions, 2003 (cat. no. 1346.0.55.002), alternatively contact the Assistant Director, Time Series Analysis on (02) 6252 6345 or e-mail <time.series.analysis@abs.gov.au>.

ARIMA MODELLING

9 ARIMA modelling relies on the characteristics of the series being analysed to project future period data. ARIMA modelling is used on a case-by-case basis where it results in reduced revisions to seasonally adjusted series when subsequent data become available. The projected values are temporary, intermediate values, that are only used internally to improve the estimation of the seasonal factors. The projected data do not affect the original estimates and are discarded at the end of the seasonal adjustment process. The ARIMA model is assessed as part of the annual reanalysis and, following the 2008 annual re-analysis, 41 of the 42 directly seasonally adjusted trade in goods and services time series use an ARIMA model. For more information on the details of ARIMA modelling see *Feature article: Use of ARIMA modelling to reduce revisions* in the October 2004 issue of *Australian Economic Indicators* (cat. no. 1350.0).

TREND ESTIMATES

10 The month-to-month movements of the seasonally adjusted estimates may not be reliable indicators of trend behaviour because they include irregular or non-seasonal movements. Trend estimates are derived by applying a 13-term Henderson moving average to the seasonally adjusted series. The use of a 13-term Henderson average can result in revisions to the estimates for the most recent six months as additional observations become available. Revisions can also occur because of changes in the original data and as a result of the re-estimation of the seasonal factors. For more information on trend estimates methods, see *Information Paper: A Guide to Interpreting Time Series—Monitoring Trends* (cat. no. 1349.0), alternatively contact the Assistant Director, Time Series Analysis on (02) 6252 6345 or e-mail <time.series.analysis@abs.gov.au>.

SIGN CONVENTION

11 In keeping with balance of payments conventions, where statistics are on a balance of payments basis, credit entries (exports) are shown without sign and debit items (imports) are shown as negative entries. For statistics on a recorded trade basis, both imports and exports are shown without sign. The calculation of percentage changes on balance of payments debit items are made without regard to sign. References to balance of payments debit items in Key Figures, Key Points, and Analysis and Comments are also made without regard to sign.

COMMODITY BREAKDOWNS OF GOODS

12 For details of the classifications used to present goods exports (credits) and imports (debits) on a balance of payments basis, see tables 6.6 and 6.7, respectively, in *Balance of Payments and International Investment Position, Australia: Concepts, Sources and Methods, 1998* (cat. no. 5331.0).

13 The correspondences used to compile statistics on a Balance of Payments basis were updated in the July 2008 issue with estimates for all time periods recompiled on the basis of the revised correspondences to maintain consistency in the time series.

14 The recorded trade statistics shown in tables 12 and 13 are classified by the Standard International Trade Classification (SITC). Imports and exports of goods at a more detailed level are available from the Time Series spreadsheets. All data from July 2005 are presented according to SITC Rev 4 and data prior to July 2005 are presented according to SITC Rev 3. For details refer to the July 2008 issue of this publication.

COMMODITY BREAKDOWNS OF SERVICES

15 The quarterly detailed services data published in table 11 are consistent with the monthly aggregates shown in table 9.

EXPLANATORY NOTES *continued*

COMMODITY BREAKDOWNS OF SERVICES *continued*

16 Monthly indicators for many of the services components that are only surveyed quarterly are not available. In particular, the Freight and Other transportation components of Total services credits are not available for publication on a monthly basis. The estimates for these items shown in table 9 are therefore derived by dividing the quarterly estimate by three. Where quarterly survey data are not available, freight debits are derived directly from imports data for the reference month as a difference between total merchandise cost, insurance and freight (CIF) and free on board (FOB), adjusted to reflect timing and processing adjustments. For freight credits and other transportation credits and debits, estimates are derived by extrapolating the last month's data by an average of movements for the same month over the three previous years.

CONFIDENTIALITY OF MERCHANDISE TRADE STATISTICS

17 The release of statistics for certain merchandise trade commodities is restricted in order to prevent the identification of the activities of an individual business, where this is requested by the business concerned. These restrictions do not affect the total value of exports and imports, but they can affect statistics at the country, state and commodity levels. Imports data that have the confidentiality restrictions 'No commodity details' or 'No value details' are aggregated into a single confidential commodity code. For data prior to September 2008, these data are added back into the appropriate state total and country total (i.e. these totals show the correct level of trade). From September 2008 these confidential data are not added back. Instead the confidential data are published as 'No country details' in the country totals and 'State not available for publication' in the state totals. Therefore, country and state totals from September 2008 may not represent the actual amount of trade in each country/state but only the trade in commodities without a 'No commodity details' or 'No value details' restriction. For information on the confidentiality restrictions applied to the merchandise trade statistics in this publication, refer to the current *International merchandise trade: Confidential Commodities List (CCL)* (cat. no. 5372.0.55.001) which can be accessed from ABS web site.

TOURISM RELATED SERVICES

18 The tourism related services memorandum items provide timely indicators of the movements in tourism related activities, not an absolute measure of the level of these activities. These series are not compiled on a balance of payments conceptual basis. However, they do provide a reasonable approximation of world tourism related activities.

19 The memorandum items have been derived by re-aggregating relevant components of the international trade in services series of the balance of payments accounts. The tourism related indicator has been derived by combining total travel services (business, education-related and other personal travel) and passenger transportation services (which includes agency fees and commission receipts for air transport).

SERVICES BY STATE AND BY PARTNER COUNTRY

20 Annual services data by state and by partner country are released twice yearly. Calendar year data are usually released with the March issue of this publication and financial year data are released with the September issue. Refer to Time series data for details.

21 Services credits are classified by the state of provision, while services debits are classified by the state of consumption. The state allocations for transportation, travel and communication services are based on a number of indicators including merchandise trade statistics by state, overseas passenger arrivals and departures by state of clearance and data provided by the Department of Education, Science and Training. The allocation for other services (about 25% of all trade in services) is primarily based on the location of the business reporting the information, which serves as a proxy for the state of provision/consumption of that service. The data should be used with care but are considered suitable for analysis over time.

EXPLANATORY NOTES *continued*

SERVICES BY STATE AND BY PARTNER COUNTRY *continued*

22 A comprehensive explanation of the data sources used and the methodology applied in the compilation of partner country statistics is provided in Chapter 17 of *Balance of Payments and International Investment Position, Australia – Concepts, Sources and Methods* (cat. no. 5331.0). Approximately 7% of total services credits and 5% of total services debits for both 2006–07 and 2007–08 are either confidential, or unable to be allocated to individual countries.

ABS DATA AVAILABLE

23 More detailed balance of payments and recorded merchandise trade data, including forward seasonal factors are available as time series spreadsheets or data cubes from the ABS website.

24 More detailed merchandise trade data by commodity, country and state, and statistics included in this and related publications are available on request. Inquiries should be made to the National Information and Referral Service as shown on the back of this publication.

RELATED PRODUCTS AND PUBLICATIONS

25 Users may also wish to refer to the following publications which can be downloaded free of charge from the ABS web site:

- *Balance of Payments and International Investment Position, Australia* (cat. no. 5302.0) – issued quarterly
- *International Merchandise Imports, Australia* (cat. no. 5439.0) – issued monthly
- *International Trade Price Indexes, Australia* (cat. no. 6457.0) – issued quarterly
- *Balance of Payments and International Investment Position, Australia: Concepts, Sources and Methods* (cat. no. 5331.0)
- *Information Paper: Quality of Australian Balance of Payments Statistics* (cat. no. 5342.0)
- *International Merchandise Trade, Australia: Concepts, Sources and Methods* (cat. no. 5489.0)
- *A Guide to Australian Balance of Payments and International Investment Position Statistics* (cat. no. 5362.0.55.001).

26 Current publications and other products released by the ABS are available from the *Statistics View*. The ABS also issues a daily *Release Advice* on the web site which details products to be released in the week ahead.

CAUTIONARY NOTE

27 The tables in this publication are presented on two bases. Tables 1–11 contain estimates of Australia's international trade in goods and services which have been adjusted for coverage, valuation and timing to a balance of payments basis. Tables 12–15 contain estimates of merchandise exports and imports based on Australian Customs Service records. Paragraph 5 of the Explanatory Notes provides an explanation of the difference between these bases.

ROUNDING

28 Where figures have been rounded, discrepancies may occur between sums of the component items and totals. Percentage movements are calculated from data at the level of precision presented in this publication (i.e. \$m) except for international merchandise trade tables.

EXPLANATORY NOTES *continued*

ABBREVIATIONS

\$b	billion (thousand million) dollars
\$m	million dollars
ABS	Australian Bureau of Statistics
APEC	Asia Pacific Economic Co-operation
ASEAN	Association of South-East Asian Nations
n.e.s.	not elsewhere specified
n.i.e.	not included elsewhere
OECD	Organisation for Economic Co-operation and Development
SAR	Special Administrative Region
SITC	Standard International Trade Classification

APPENDIX RELATED ARTICLES

<i>Article</i>	<i>Source(a)</i>	<i>Issue</i>
Investment		
Foreign ownership of equity	5302.0	Sep qtr 2007
Kangaroo bonds	1301.0	2006
Foreign currency exposure	5308.0	Mar qtr 2005
Gross external debt	5302.0	Sep qtr 2003
Balance of payments		
International comparison of balance of payments statistics	(b)5363.0	1998–99
Merchandise trade		
Characteristics of Australian Exporters	5368.0.55.006	2007–08
Export and import invoice currencies, 2006	5368.0	Dec 2007
100 years of international trade statistics	5368.0	Oct 2007
New methodology for deriving counts of Australian exports	5368.0	Feb 2006
Australia's Importers, 2003–04	5368.0	Nov 2004
Australia's Exporters, 2003–04	5368.0	Oct 2004
Australia's trade with the USA	5368.0	Mar 2004
Foreign ownership of Australian exporters and importers	5496.0.55.001	2002–03
Major commodities traded by Australia, 1991 to 2000	(b)5422.0	Dec qtr 2000
Trade in services		
International trade in services by partner country, 2006, preliminary	5368.0	Dec 2006
Changes to International trade in services statistics, August 2006	5368.0	Aug 2006
Changes to International trade in services travel statistics	5368.0	Aug 2005
Finance		
Impact of the farm season on Australian production in 2002–03 and 2003–04	1301.0	2005
Recent trends in construction and first home buyers finance	5609.0	Mar 2002
Household sector data in the financial accounts	5232.0	Mar qtr 2002
Technical information		
Revisions to international standards in monthly international trade in goods and services statistics from August 2009	5368.0.55.012	2009
Changes to International Trade in Goods Industry Statistics, July 2009	5368.0.55.011	Dec 2008
Technical note 1 - Income on debt	5302.0	Jun qtr 2008
Technical note 2 - Use of CDI data	5302.0	Jun qtr 2008
Impact of introducing Revision 4 of the Standard International Trade Classification	5368.0.55.010	2008
Changes to international trade statistics July 2008	5368.0.55.009	2007–08
Introduction of revised international standards in ABS economic statistics in 2009	5310.0.55.001	2007
Changes on 1 January 2007 to Statistical Codes in the AHECC and the Customs Tariff	1233.0.55.001	Nov 2006
ABS implementation in January 2007 of revisions to international trade classifications, 2007	5368.0.55.005	June 2006
Revised treatment of Goods for Processing in Merchandise Trade and Balance of Payments Statistics	5368.0	May 2006
Impact of Customs and ABS changes on import statistics from October 2005	5439.0	Oct 2005
ABS management of the impact of the implementation of the imports component of the New Customs System	5439.0	Aug 2005
Changes to country and port classifications	5368.0	May 2003
Implementation of New Customs Systems	5368.0	Aug 2004
The effect of customs changes on export statistics	5422.0	Jun qtr 2002
Data confidentiality	5422.0	Dec qtr 1999

- (a) In the ABS web site home page, select Statistics; By Catalogue Number; and click on the specified catalogue number and issue. Note: in some instances, a particular issue of the publication can be found in the Past & Future Releases page of the catalogue.
- (b) This article can be found in pdf format by referring to the Downloads page of the specified issue of this publication on the ABS web site.

FOR MORE INFORMATION . . .

INTERNET **www.abs.gov.au** the ABS website is the best place for data from our publications and information about the ABS.

INFORMATION AND REFERRAL SERVICE

Our consultants can help you access the full range of information published by the ABS that is available free of charge from our website. Information tailored to your needs can also be requested as a 'user pays' service. Specialists are on hand to help you with analytical or methodological advice.

PHONE 1300 135 070

EMAIL client.services@abs.gov.au

FAX 1300 135 211

POST Client Services, ABS, GPO Box 796, Sydney NSW 2001

FREE ACCESS TO STATISTICS

All statistics on the ABS website can be downloaded free of charge.

WEB ADDRESS www.abs.gov.au